

FIG. 1

FOOTPRINT

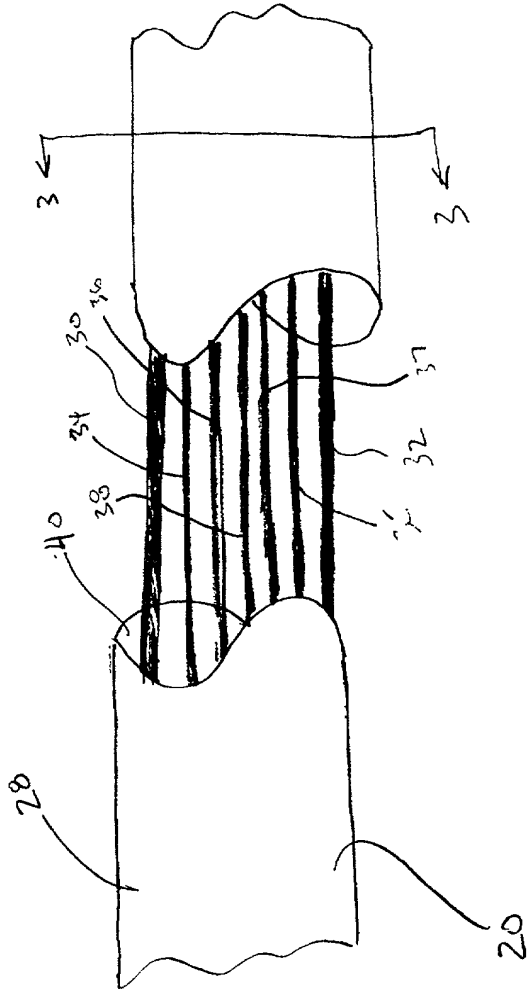


FIG. 2

09826781.041701

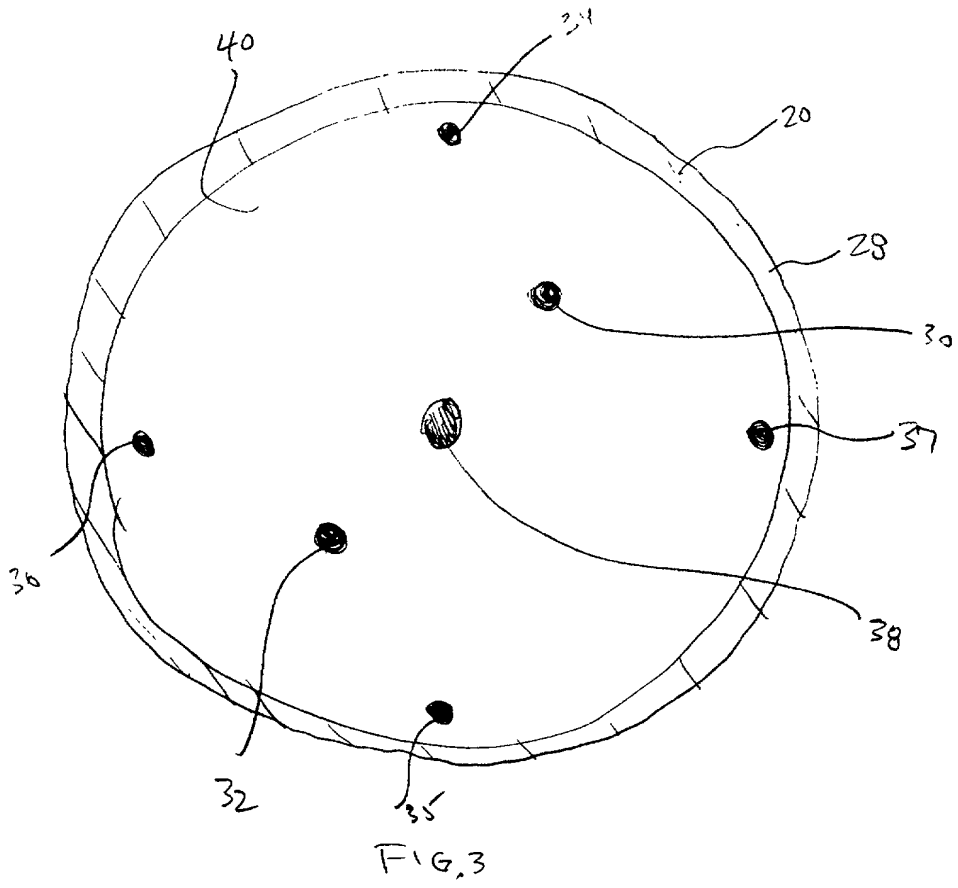


FIG. 3

FOOT PHOTO

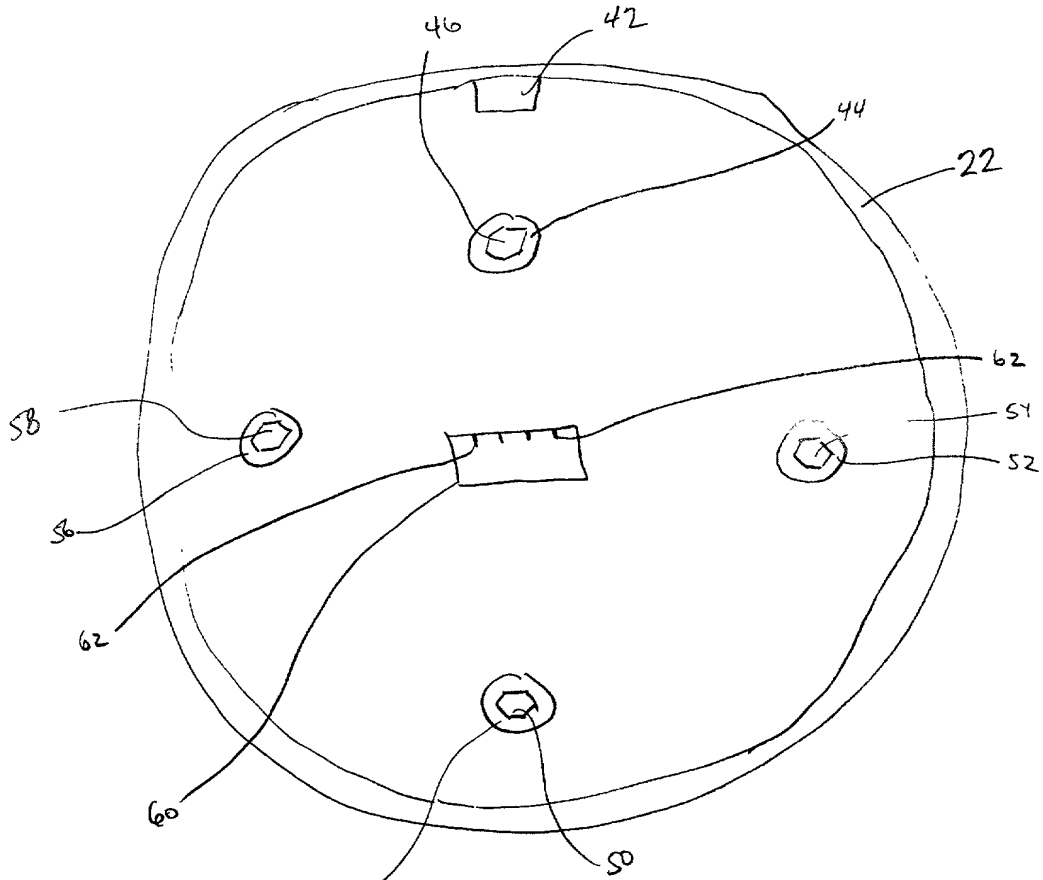


FIG. 4

09296781-044701

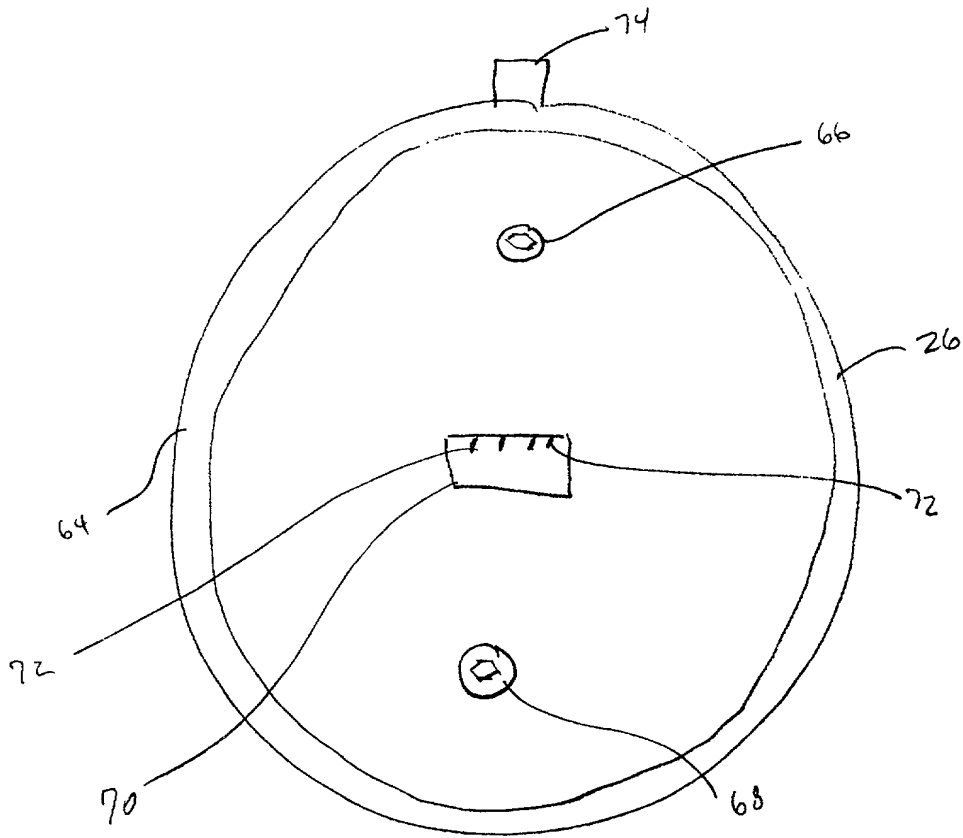


FIG. 5

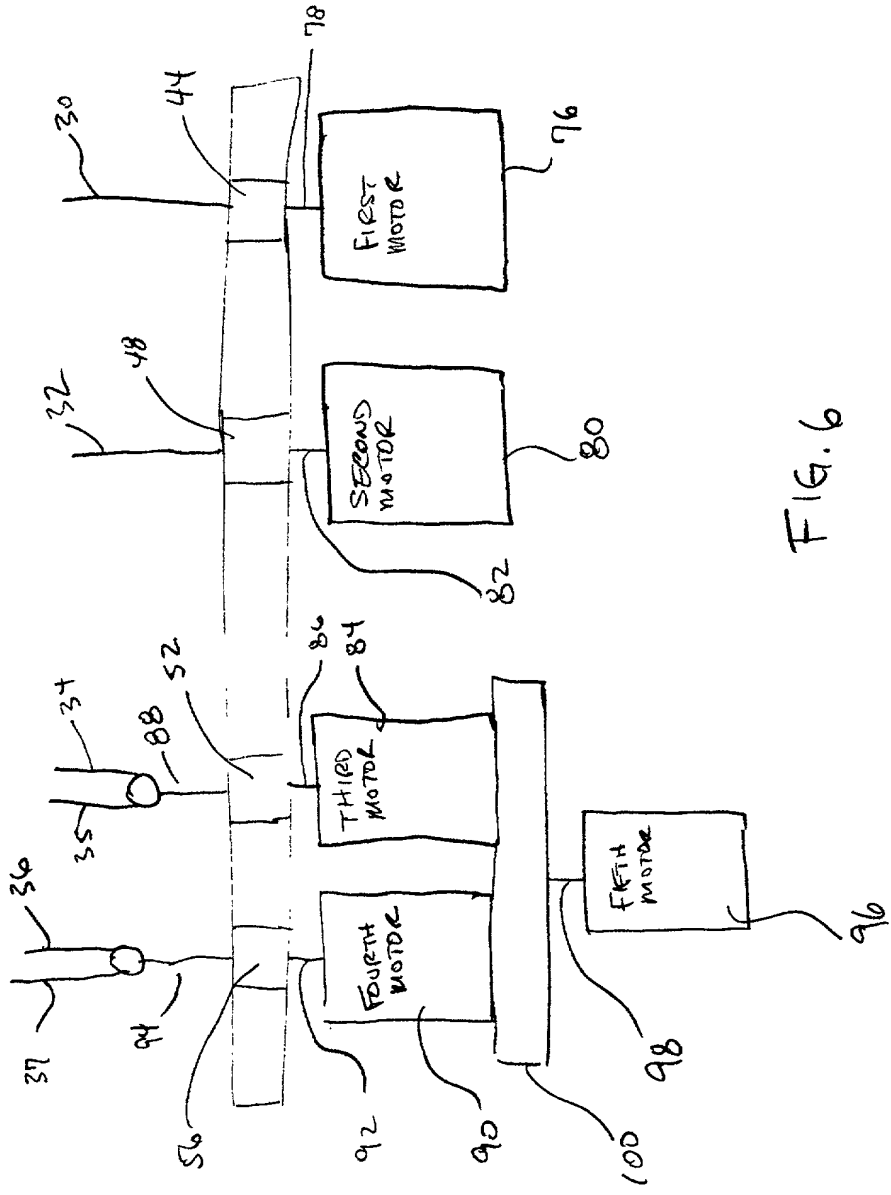


FIG. 6

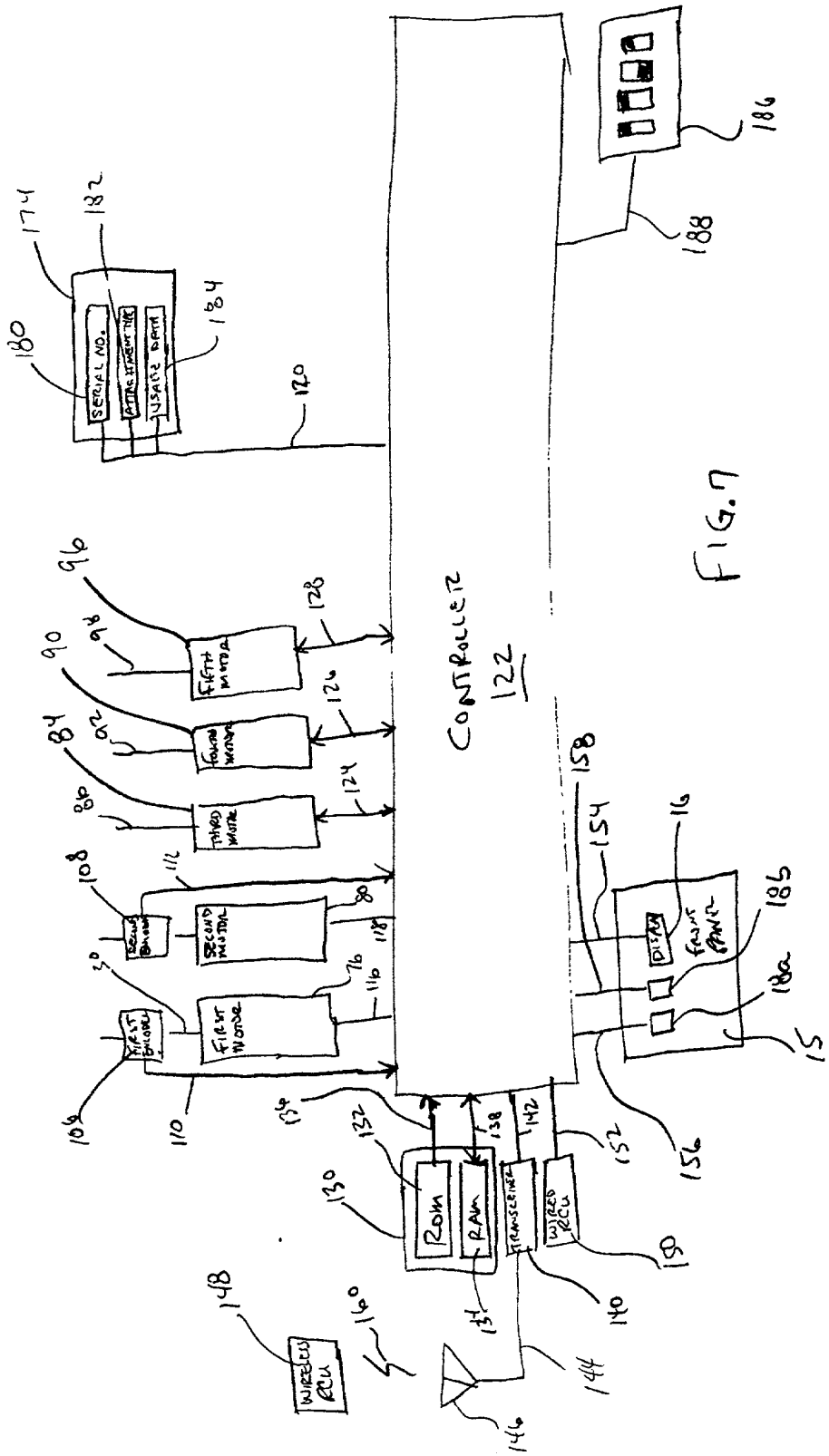


FIG. 7

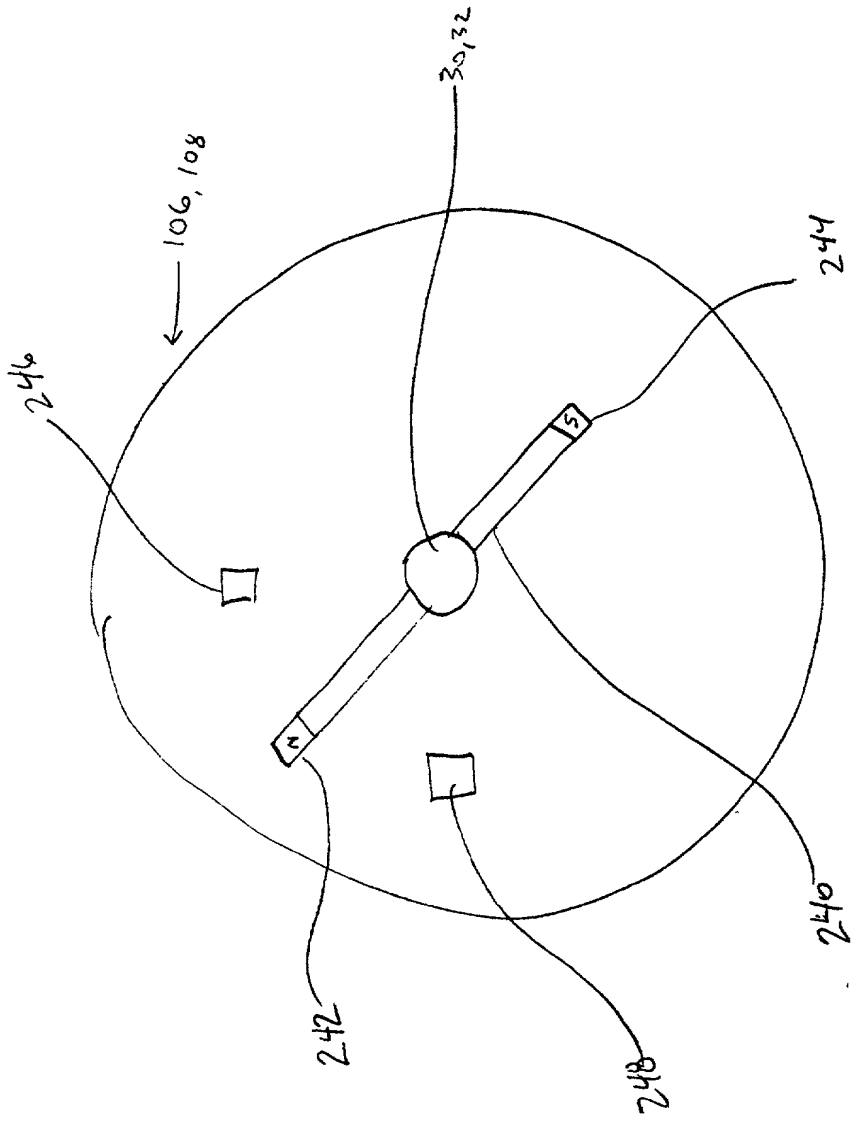


FIG. 8



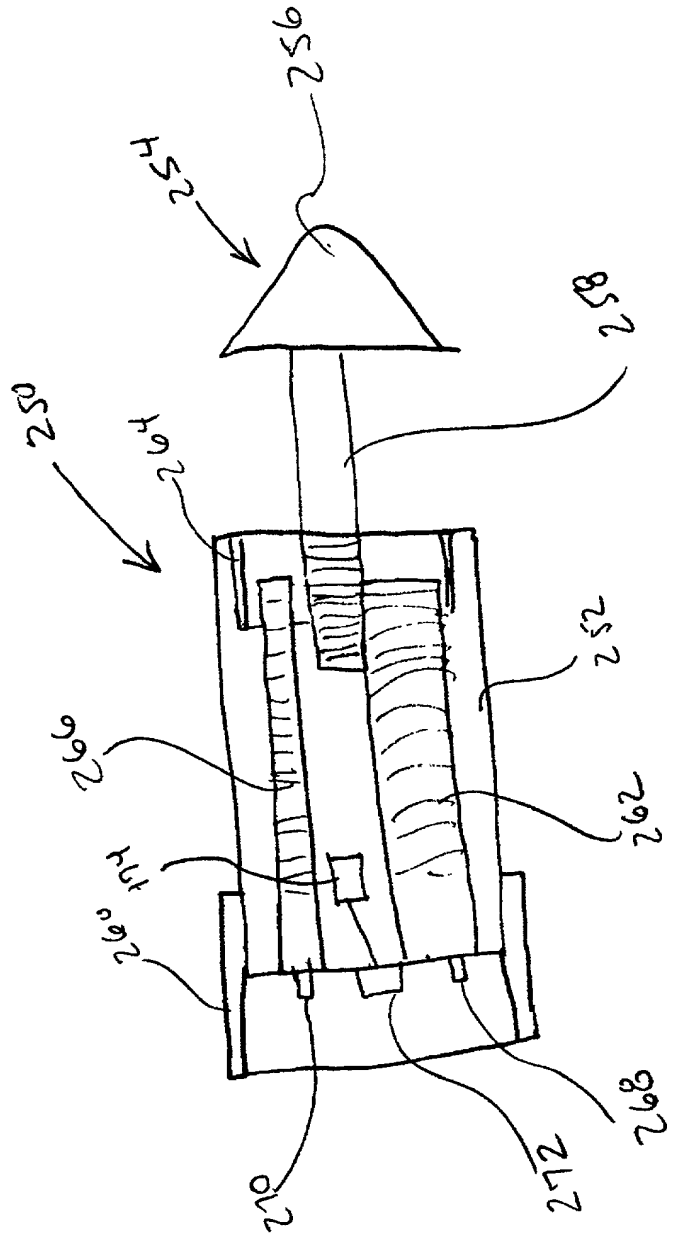


FIG. 9A

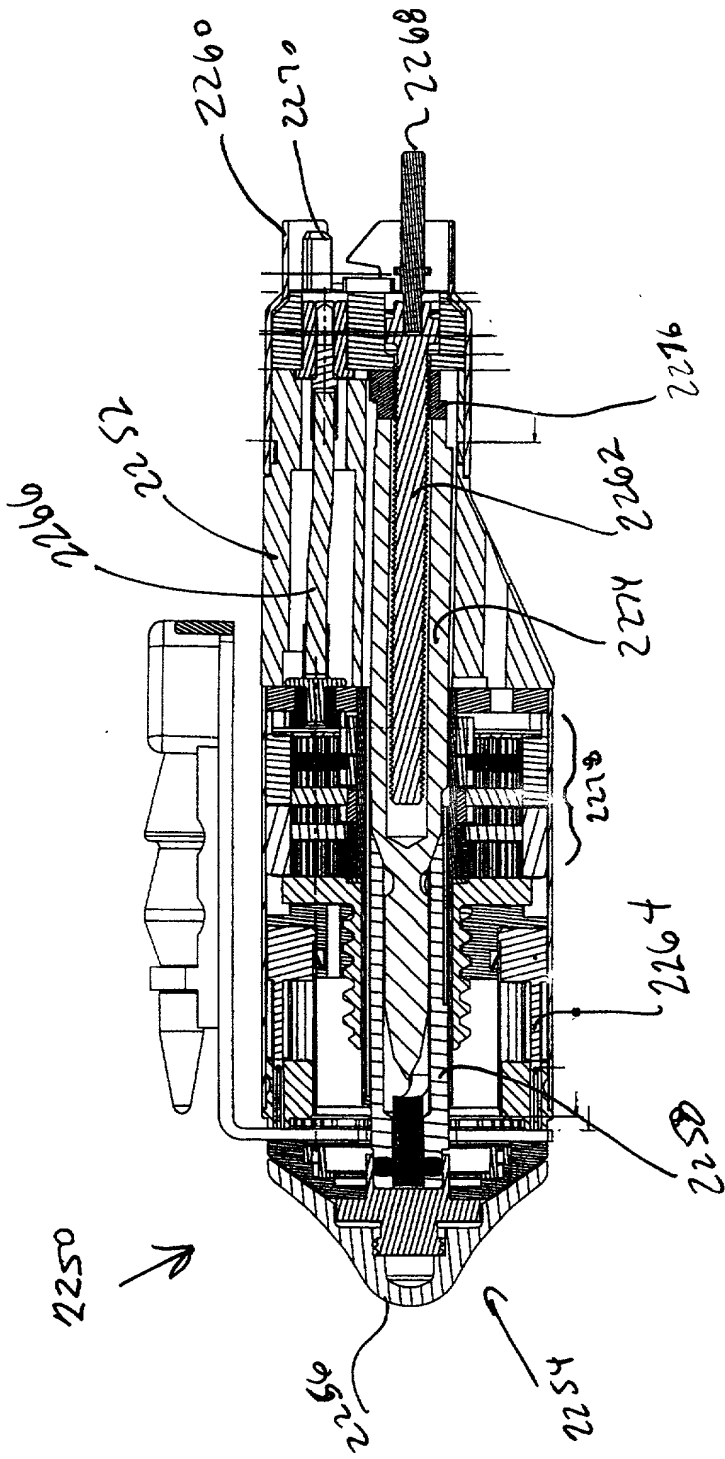


Figure 9B

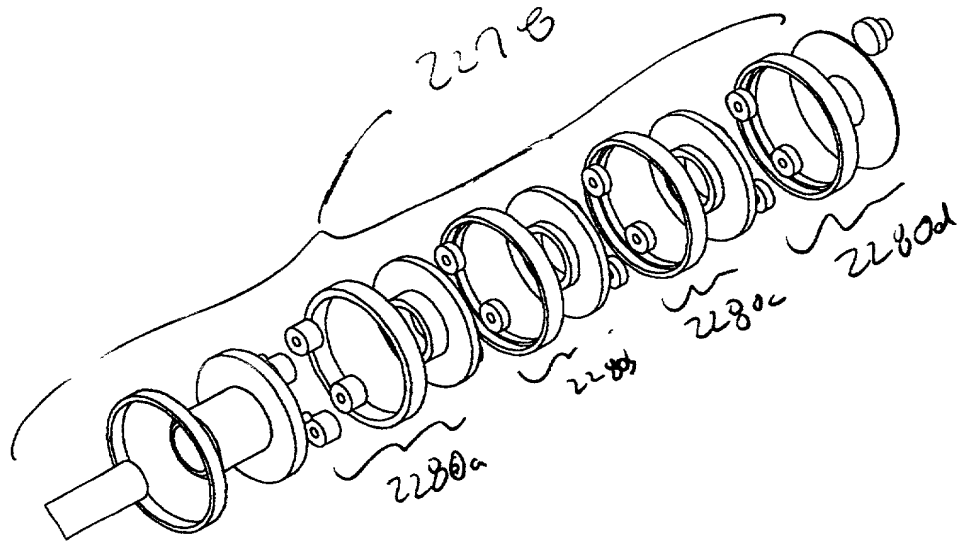


FIG. 9C

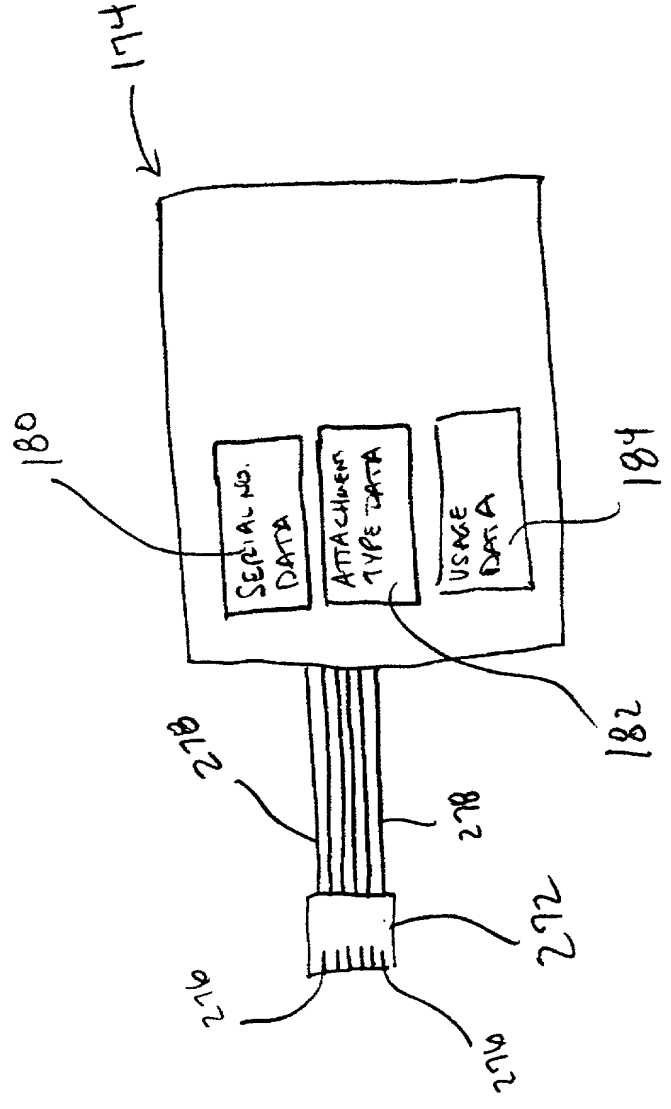
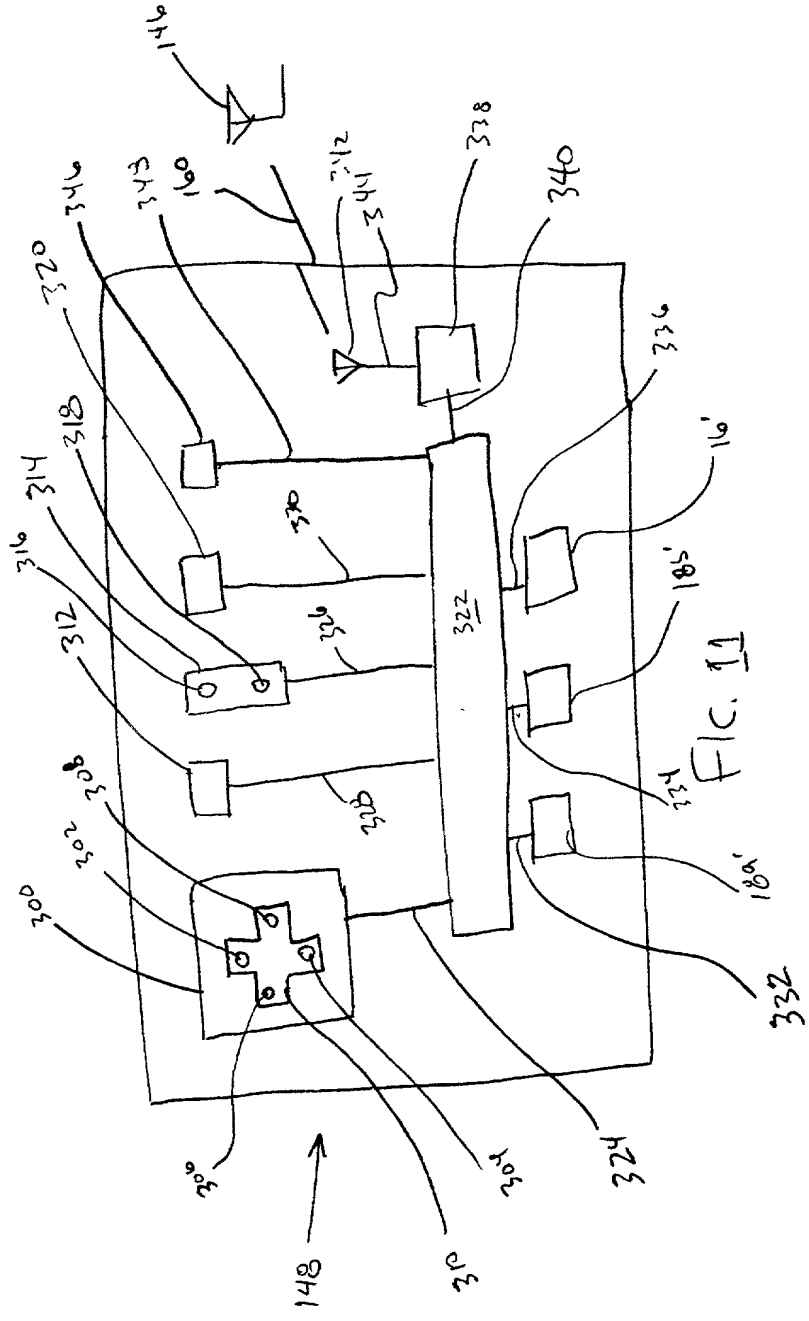


FIG. 10



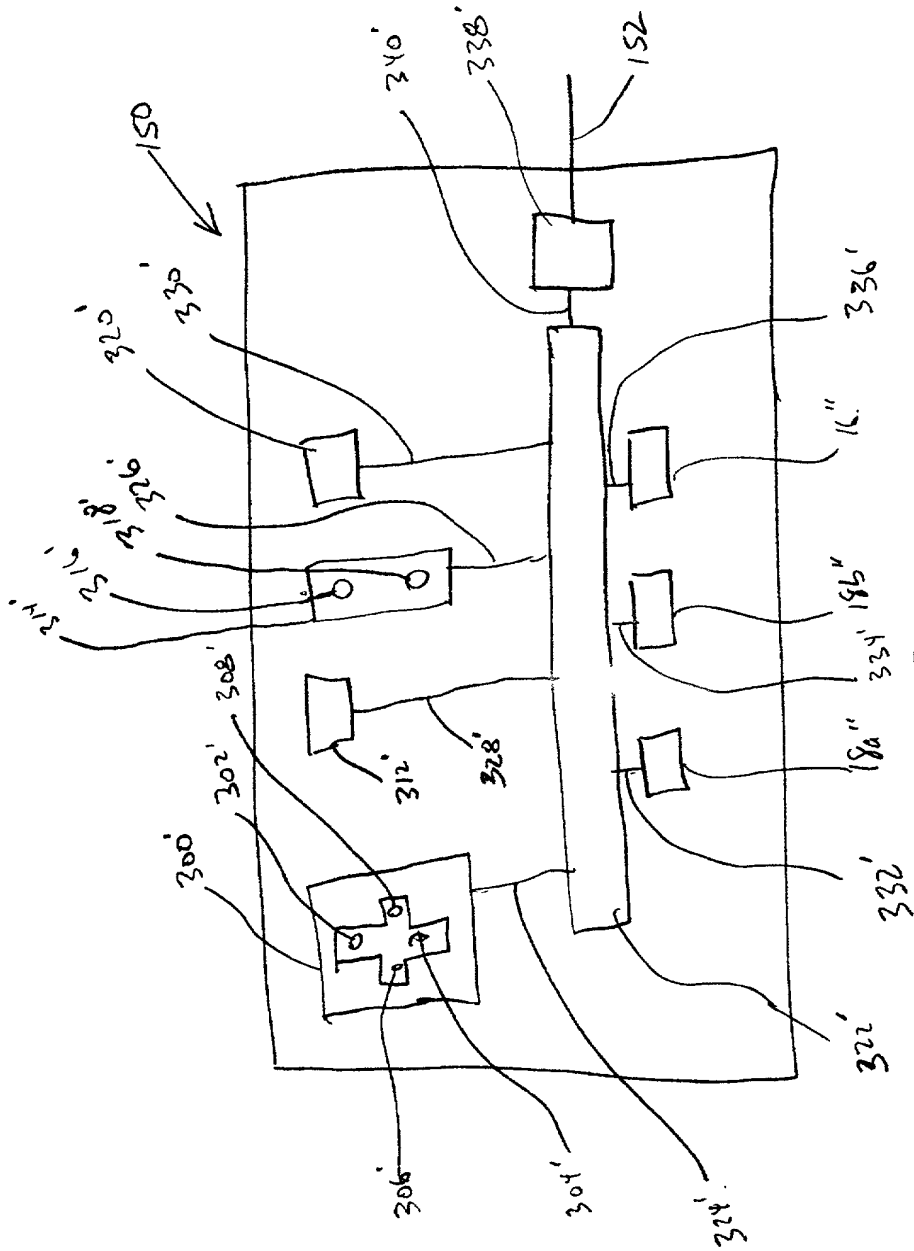


FIG. 12

FOR "PATENT" PURPOSES

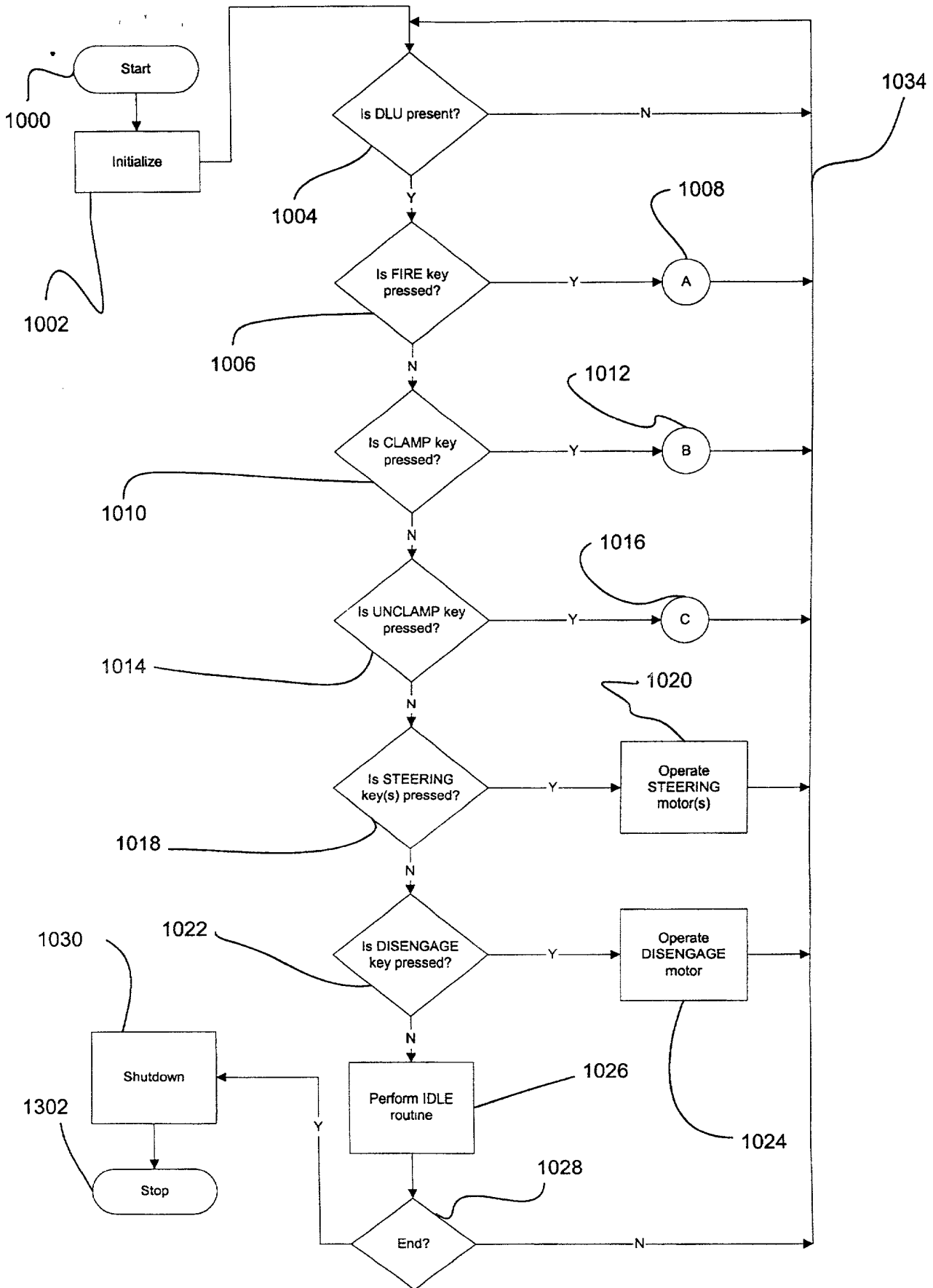


Figure 13

FOR "FOR" FEED

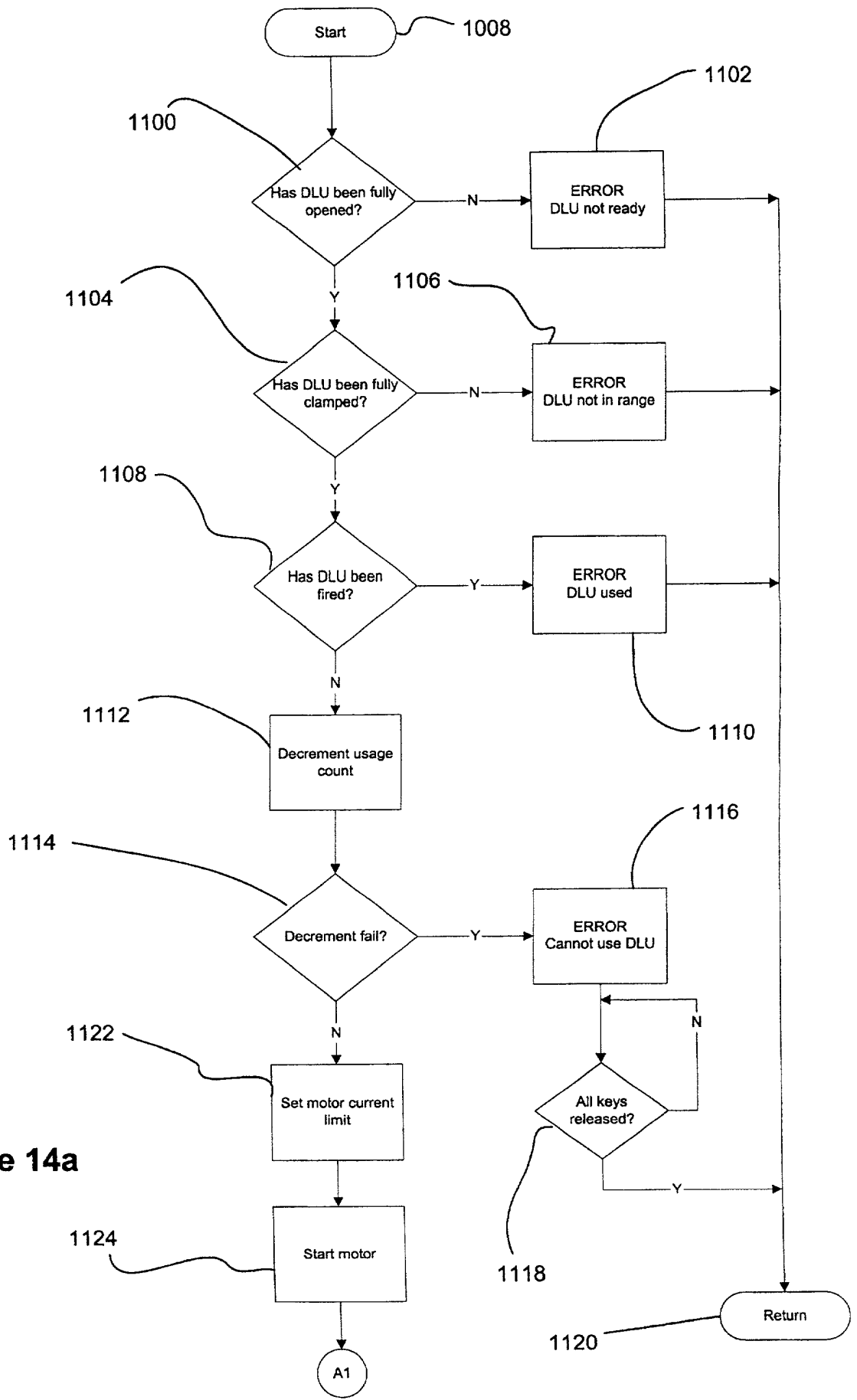


Figure 14a



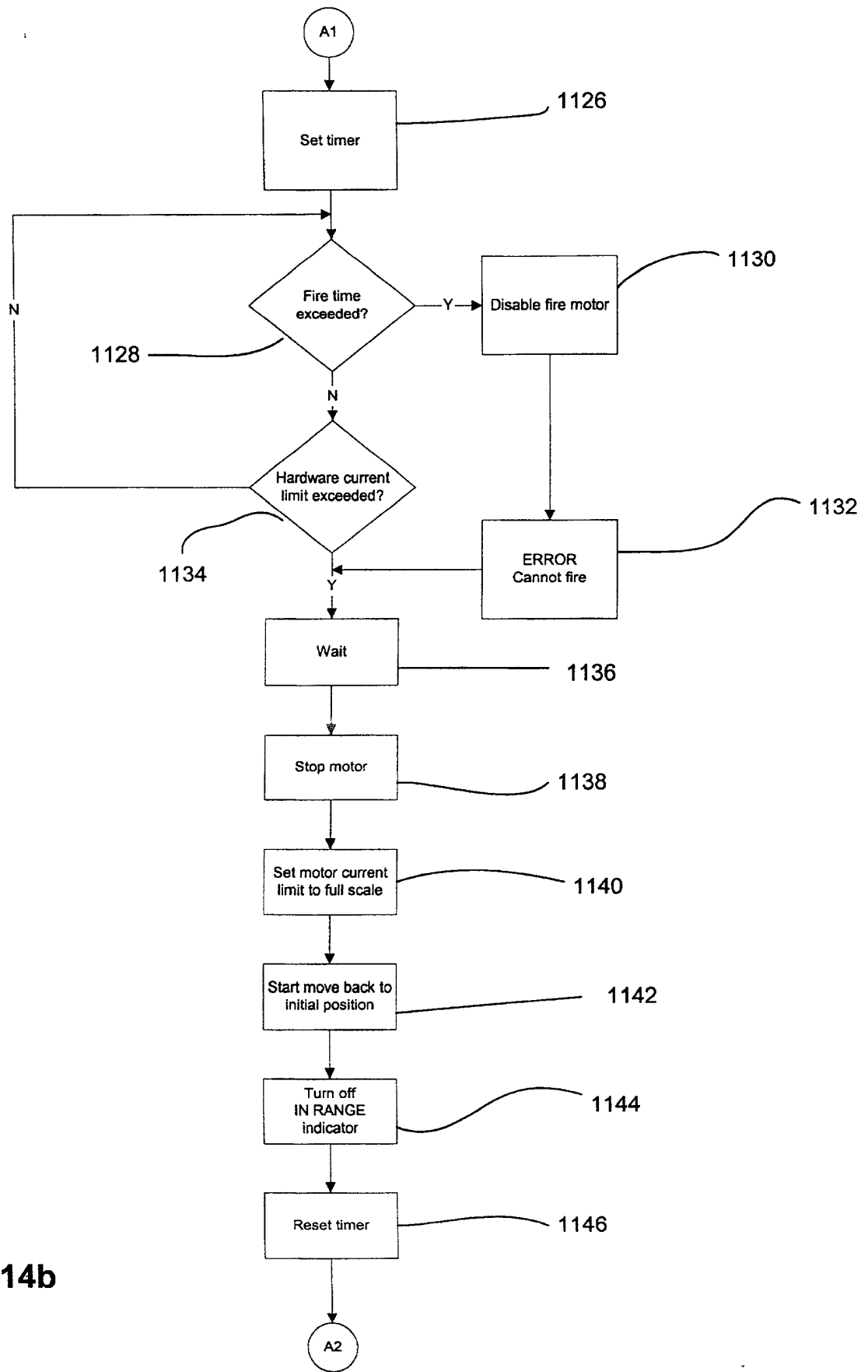


Figure 14b

"COPY" 041701 092321

0929741 0410 10240" TB292360

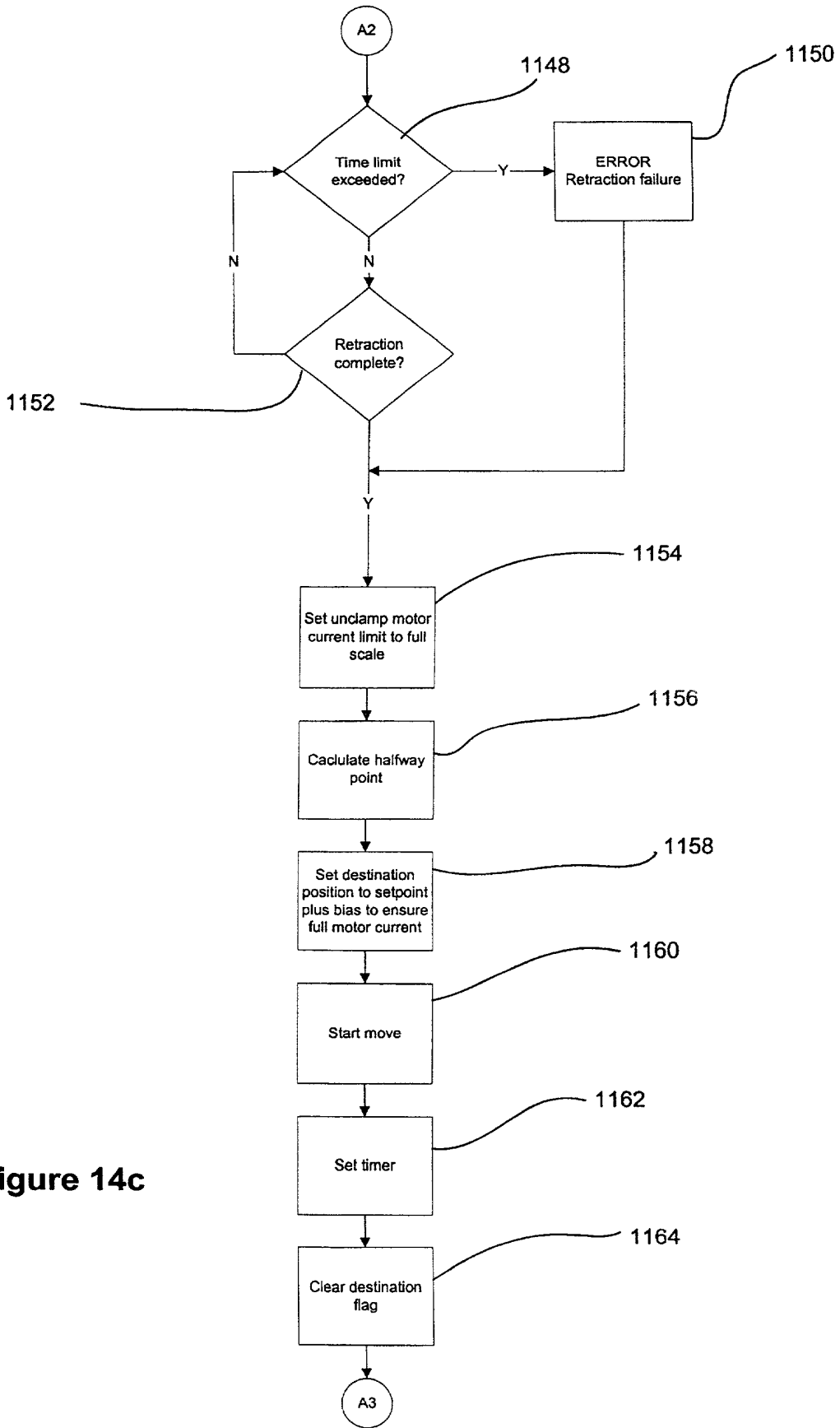


Figure 14c

09267292B60

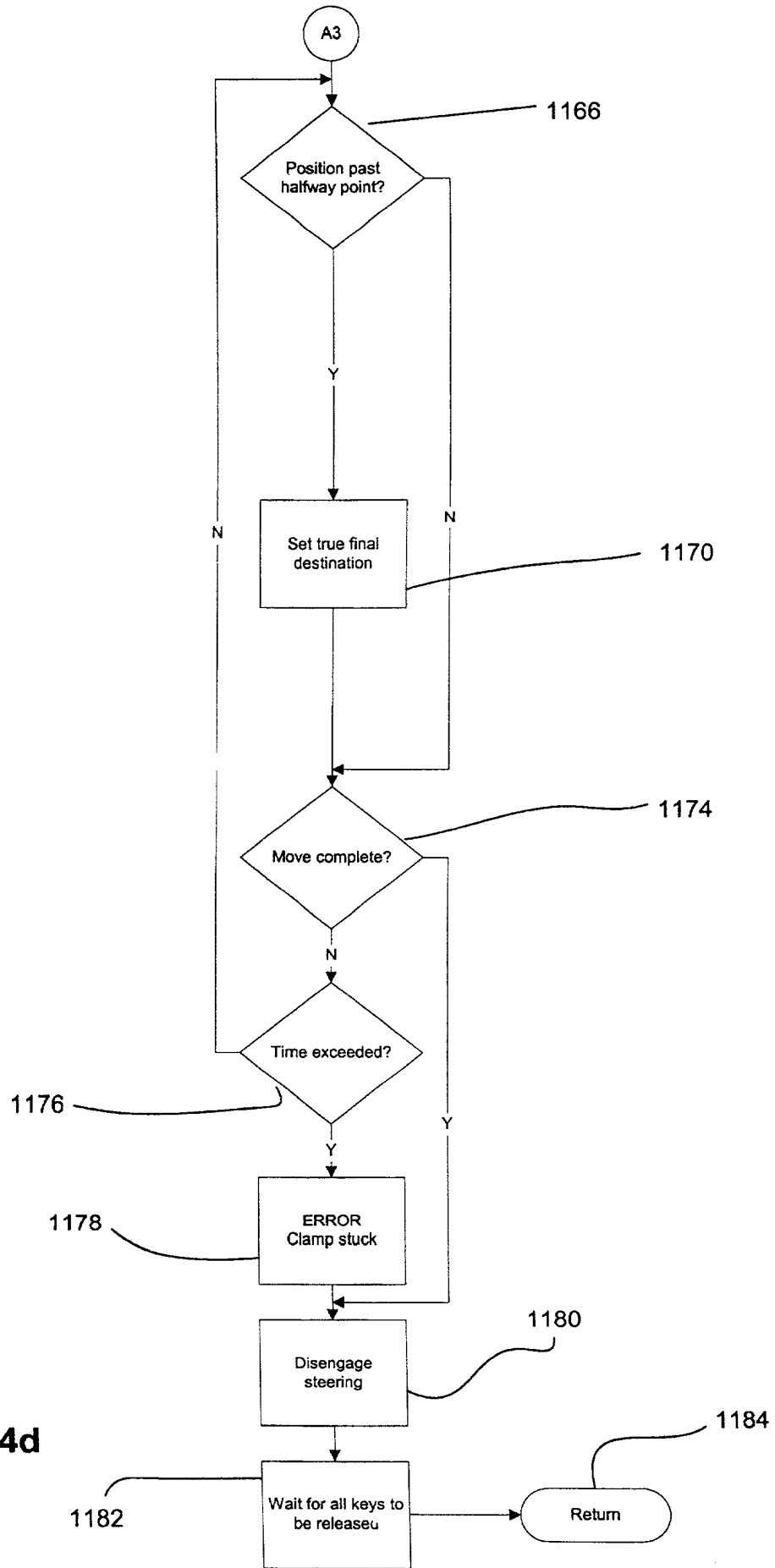


Figure 14d

092740" F23E260

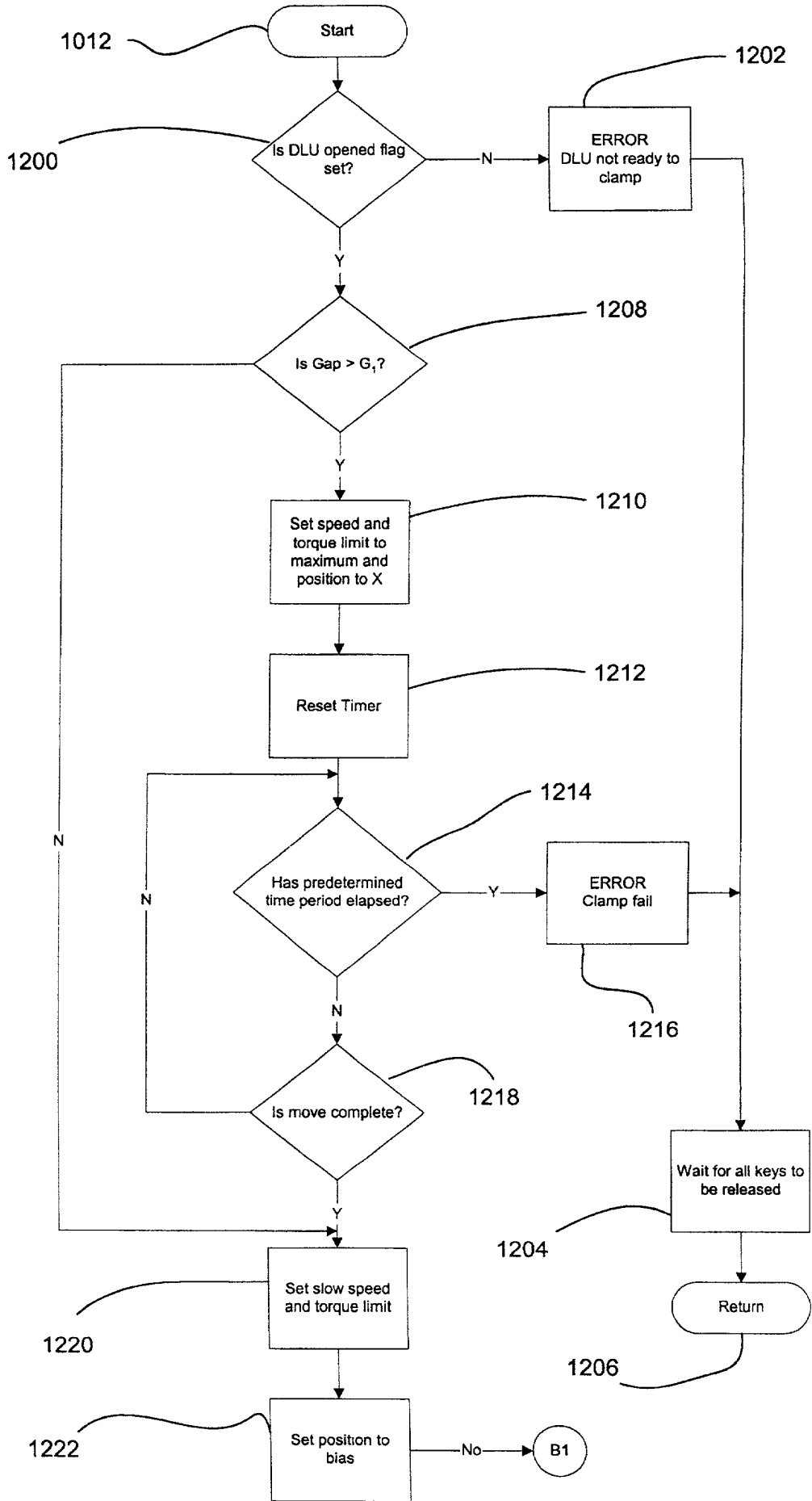


Figure 15a

FOOTNOTED

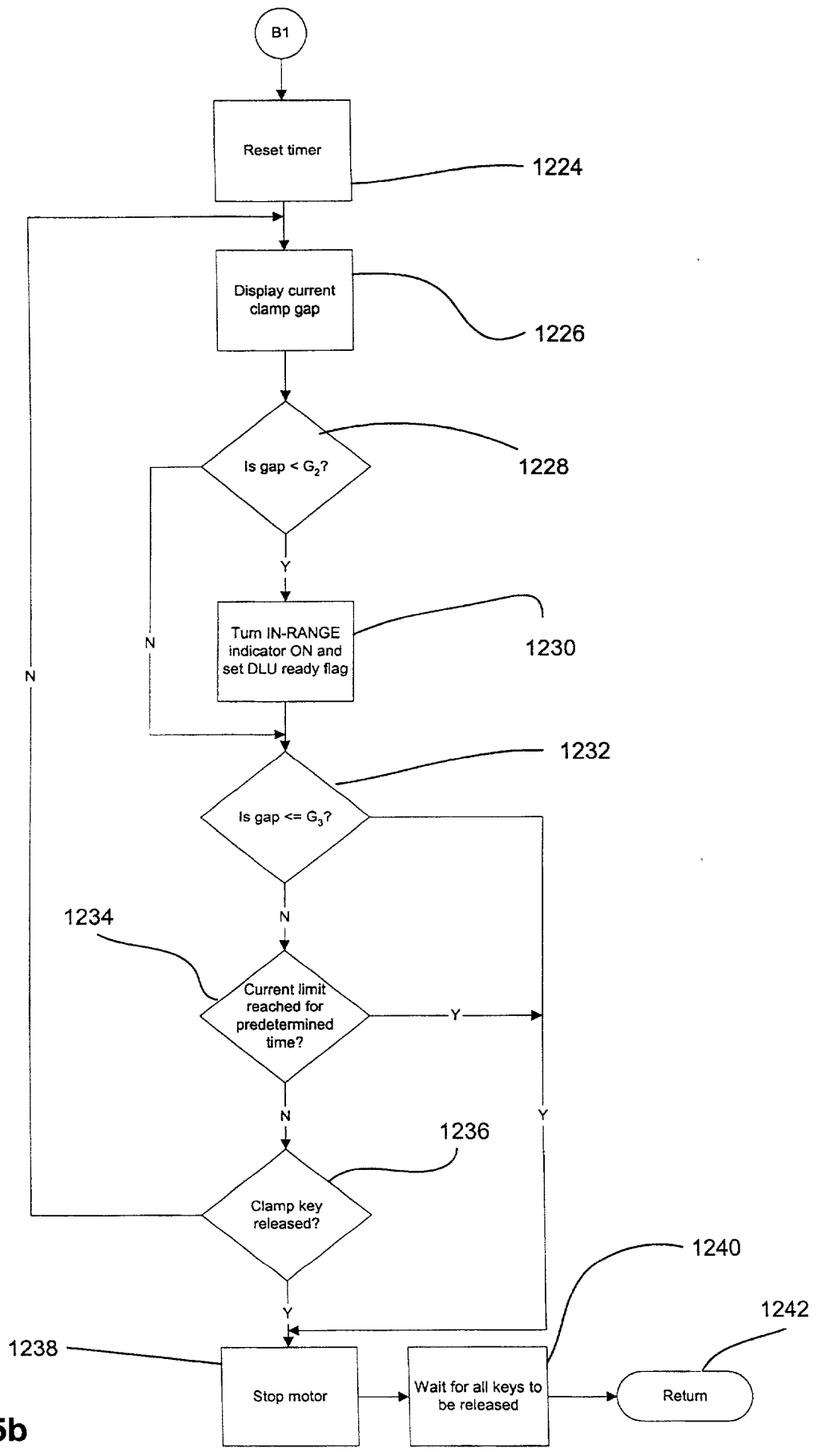


Figure 15b

0923701 041701

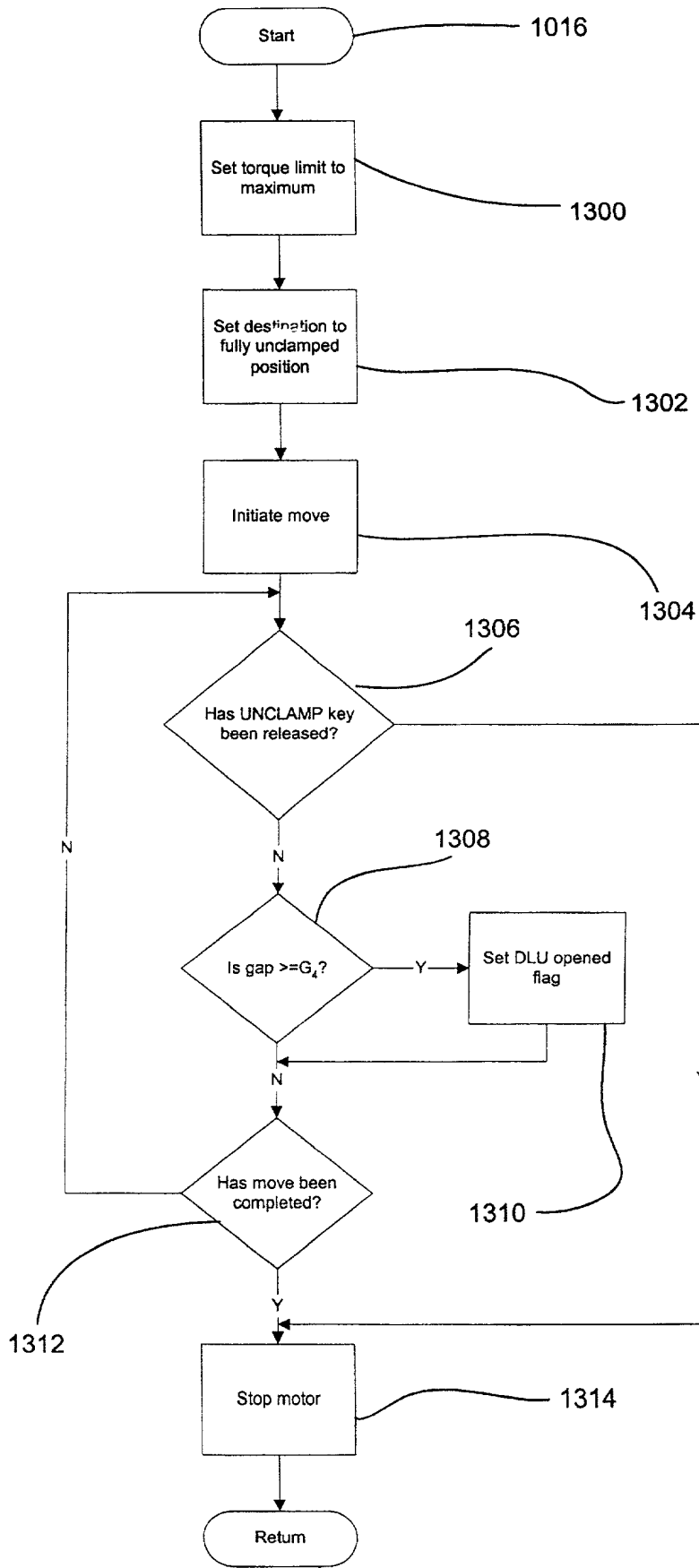


Figure 16

09232721 011701

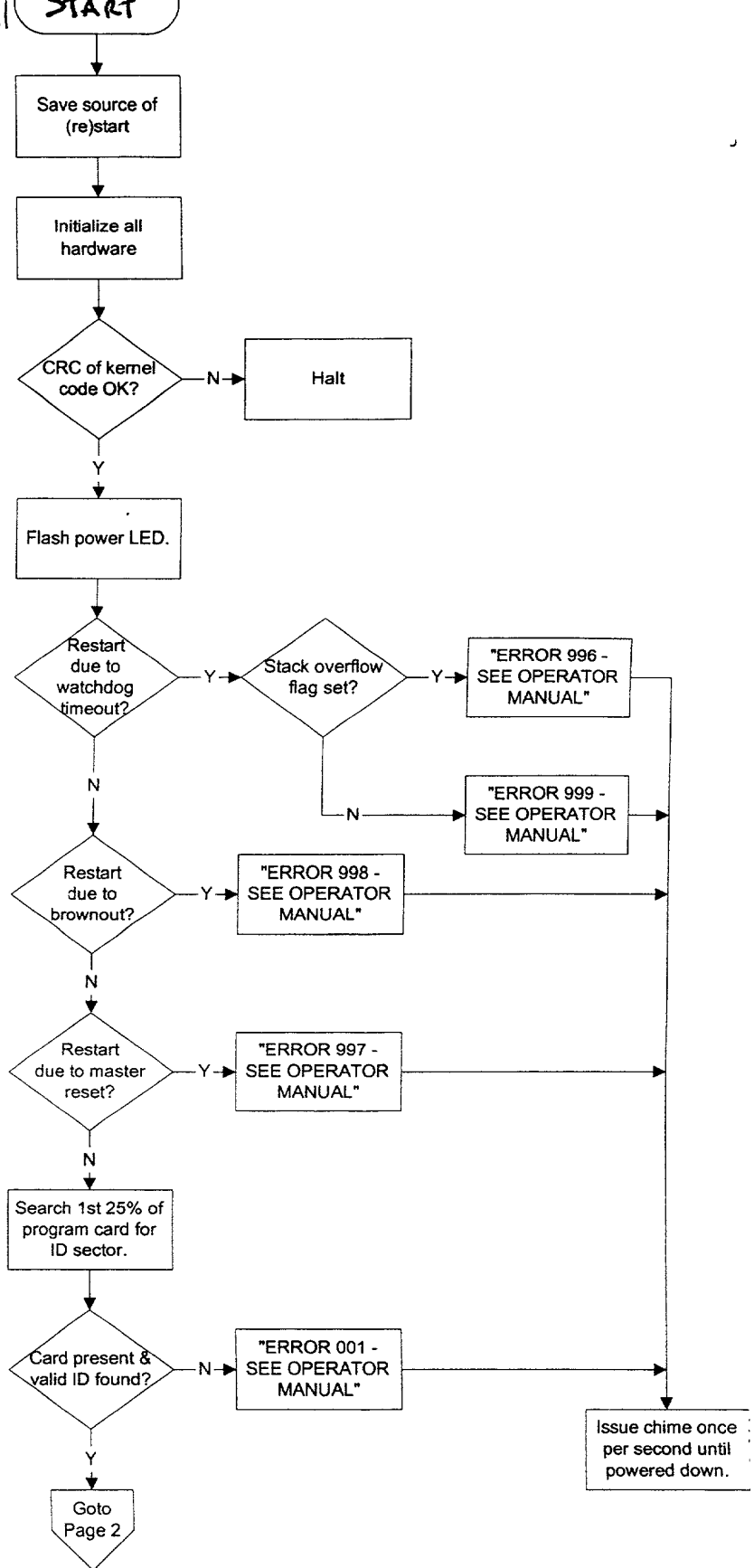
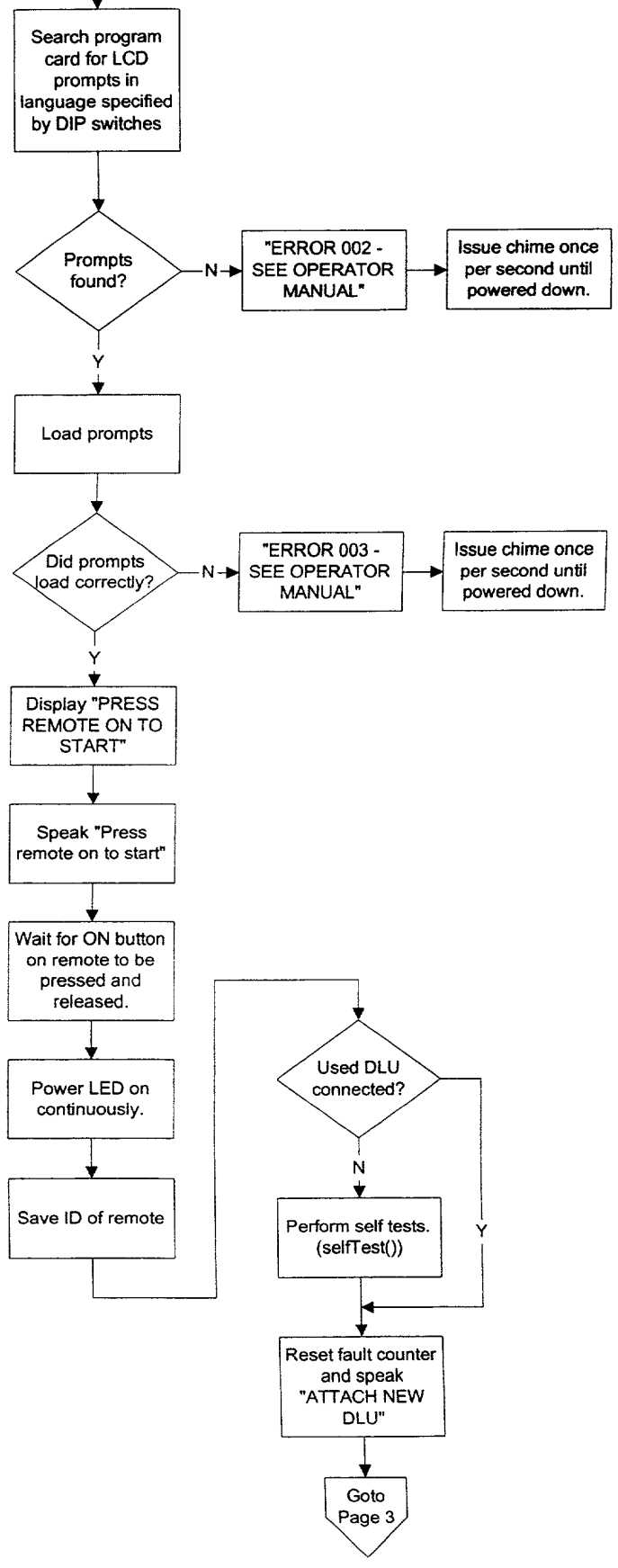


FIG. 17a



0933721-044791  
T04740" T249E650

FIG. 17b



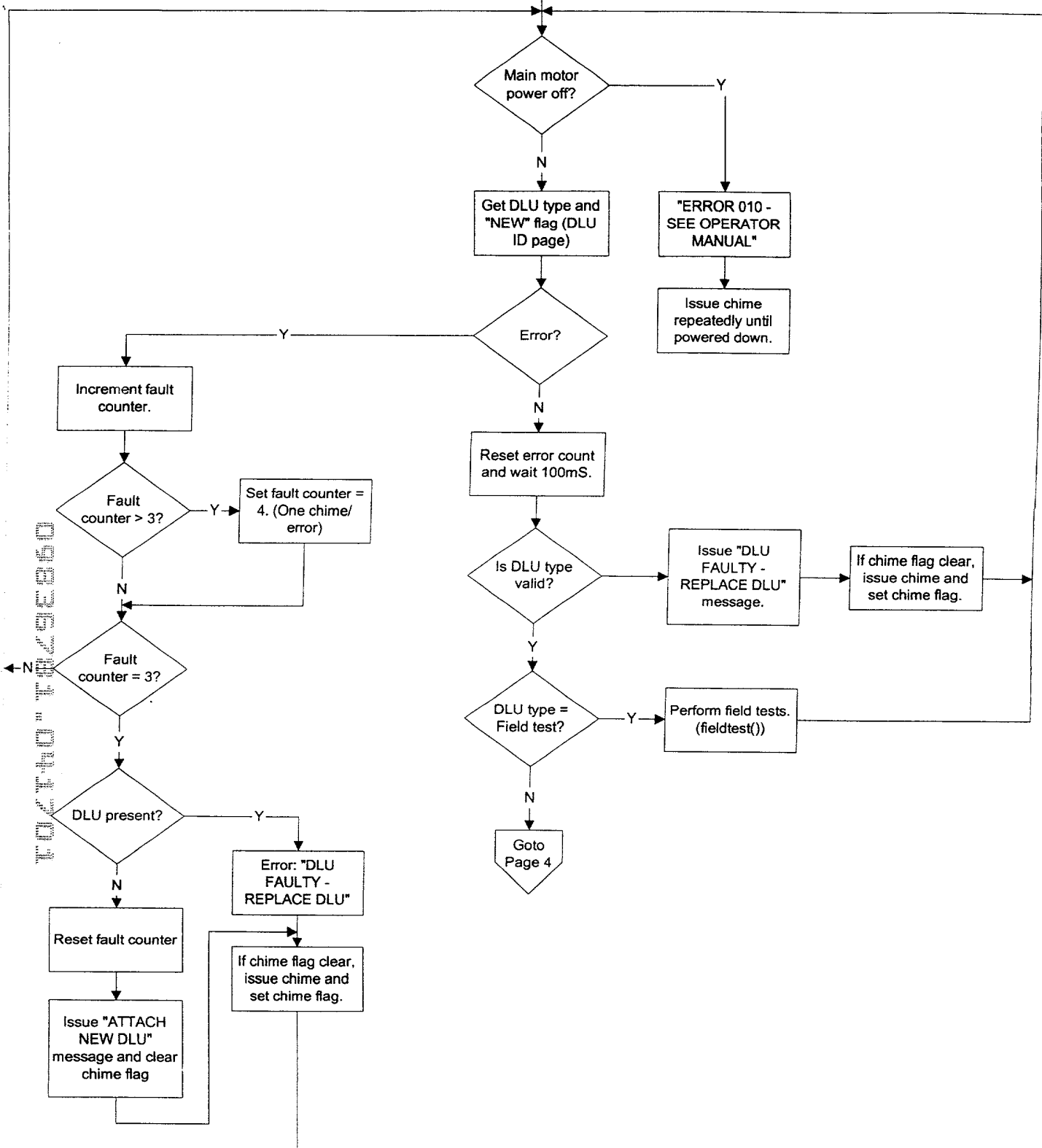


FIG. 17c

09292704701

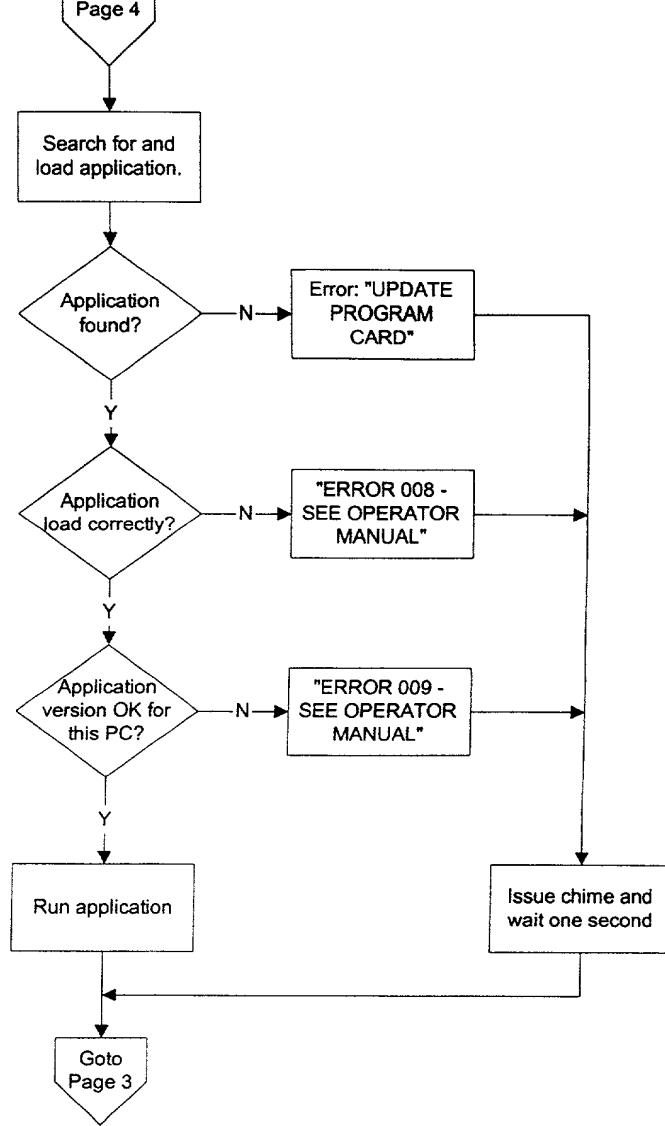


FIG. 17d

FOR "FO" FOR "FO"

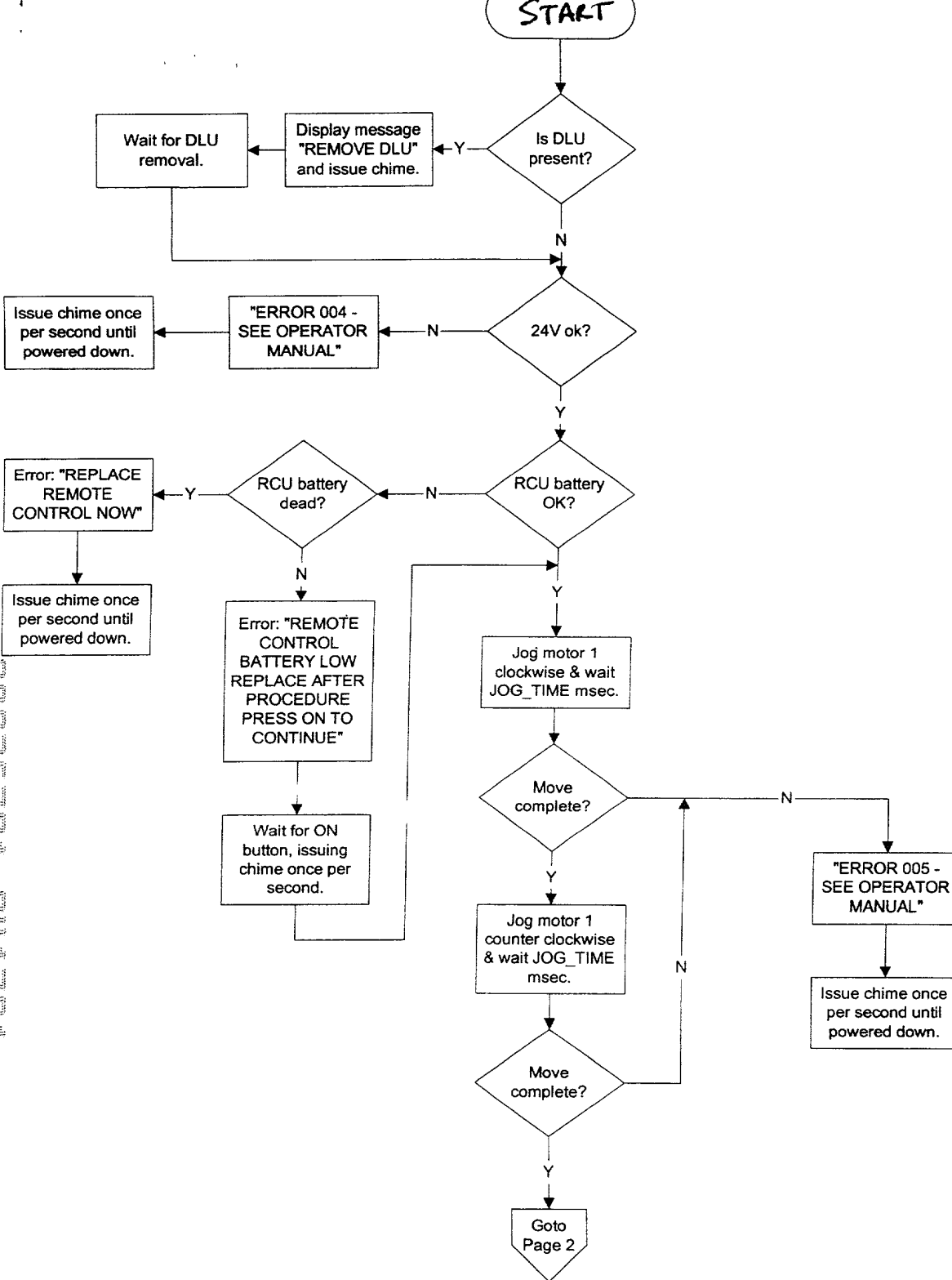


FIG. 18a

09036781-041701

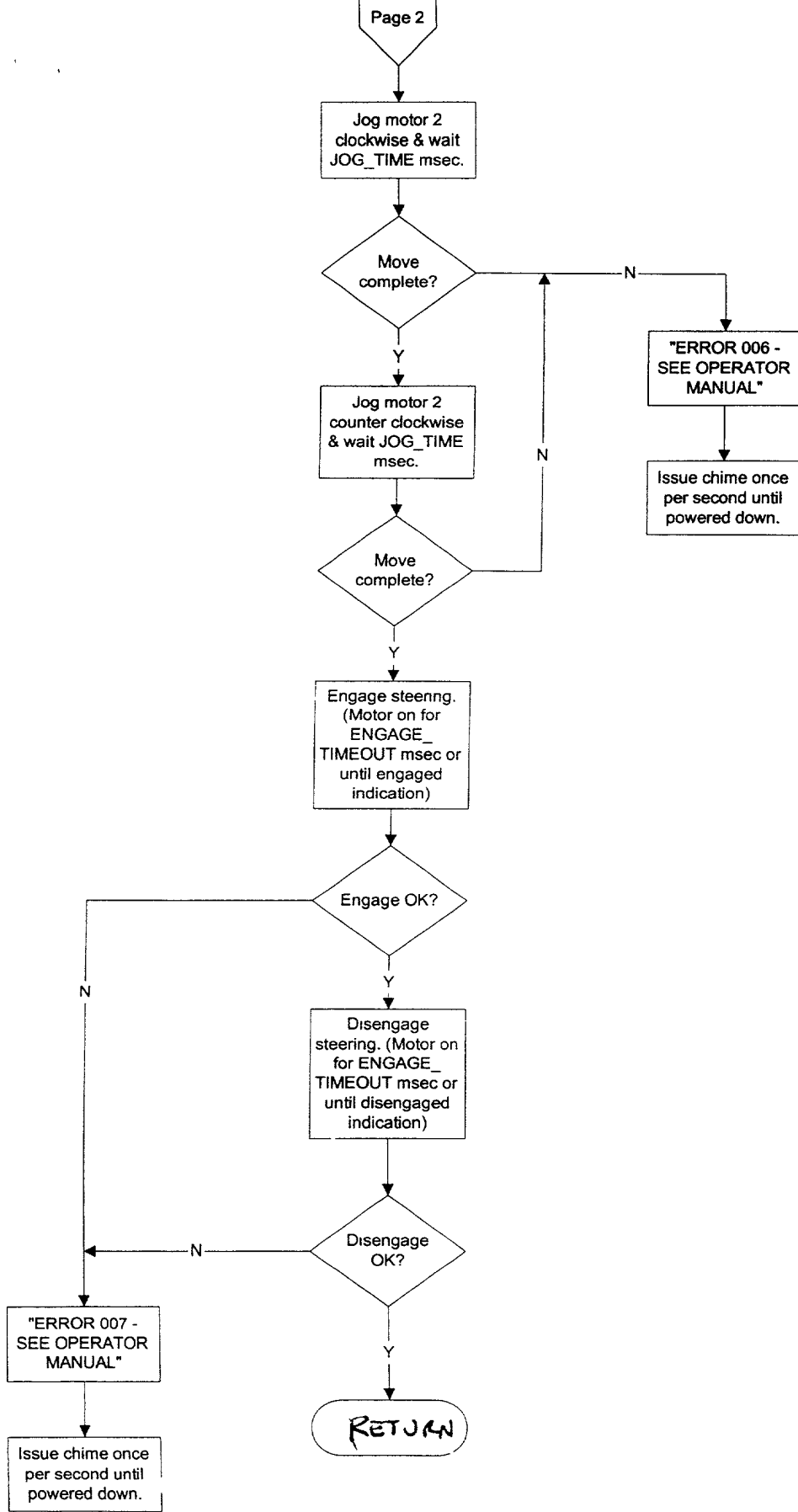


FIG. 186

09036784-044701

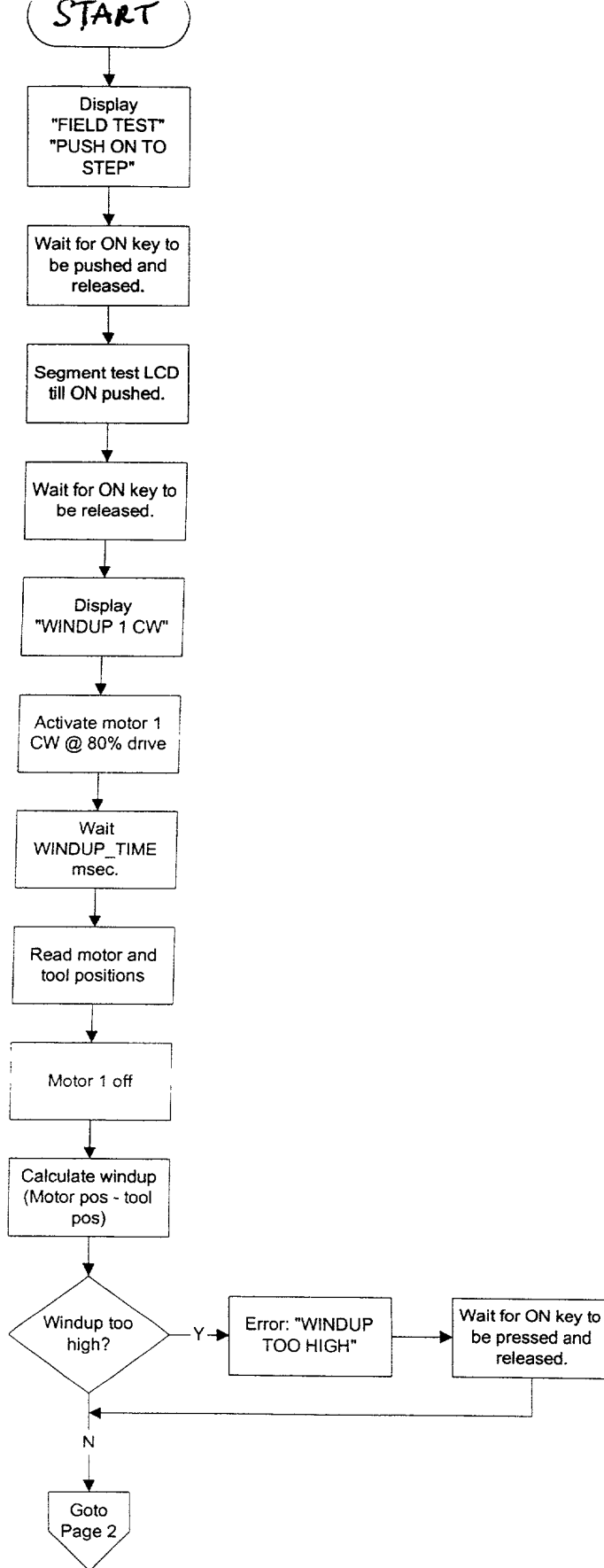


FIG. 19a

092327047  
T29260

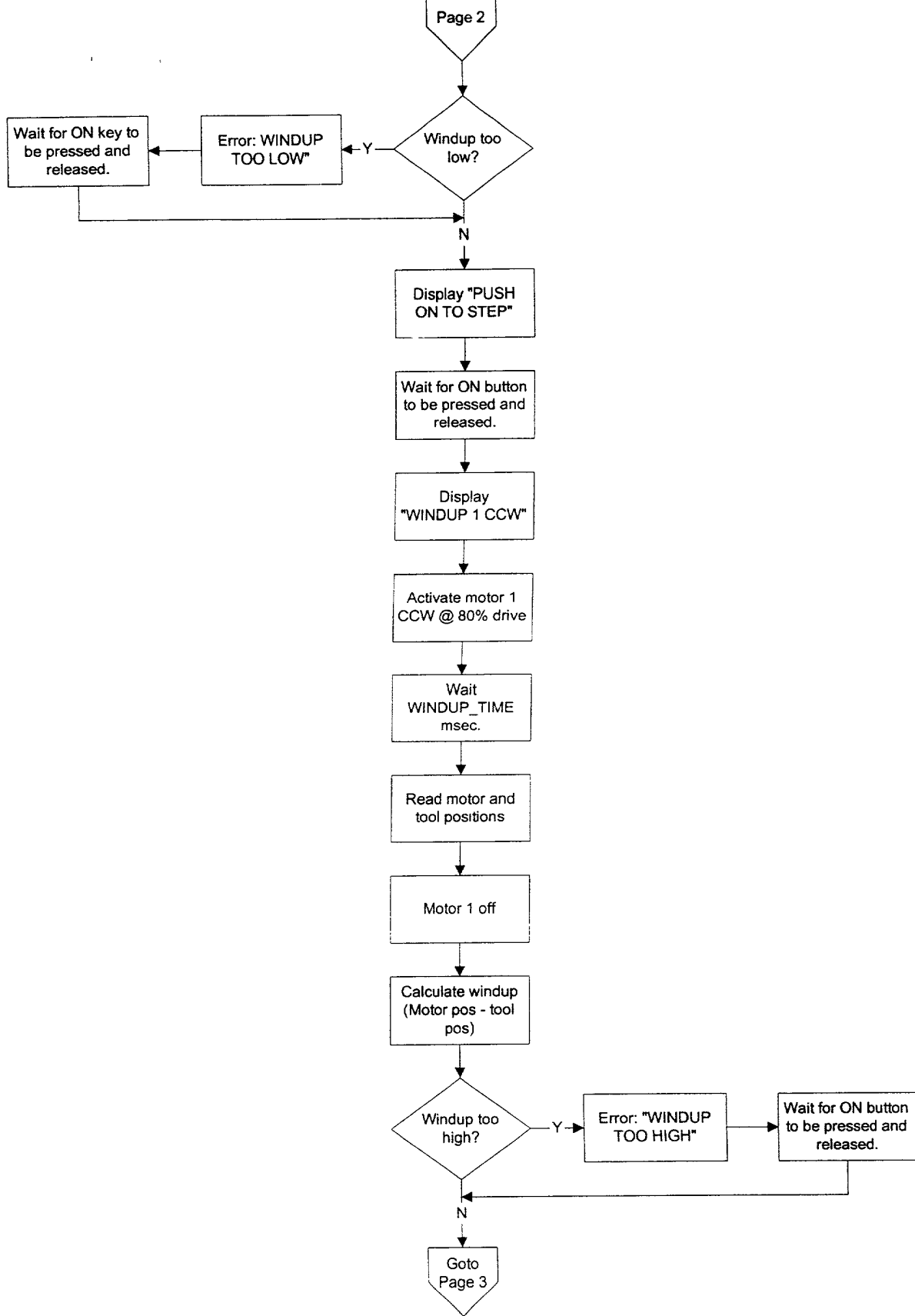


FIG. 196

09292704 04704

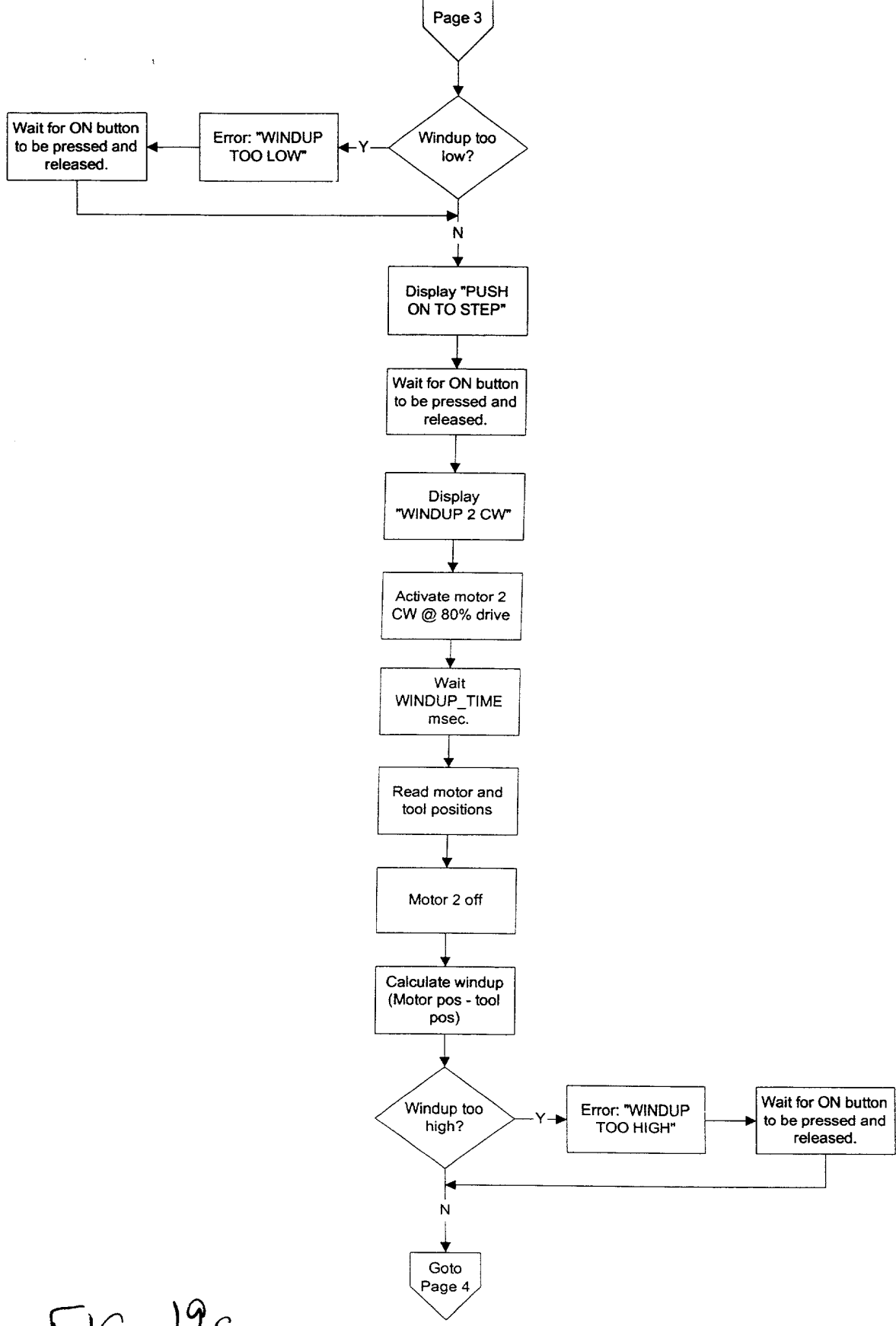


FIG. 19c

093971 047  
FOIHO" FB49E260

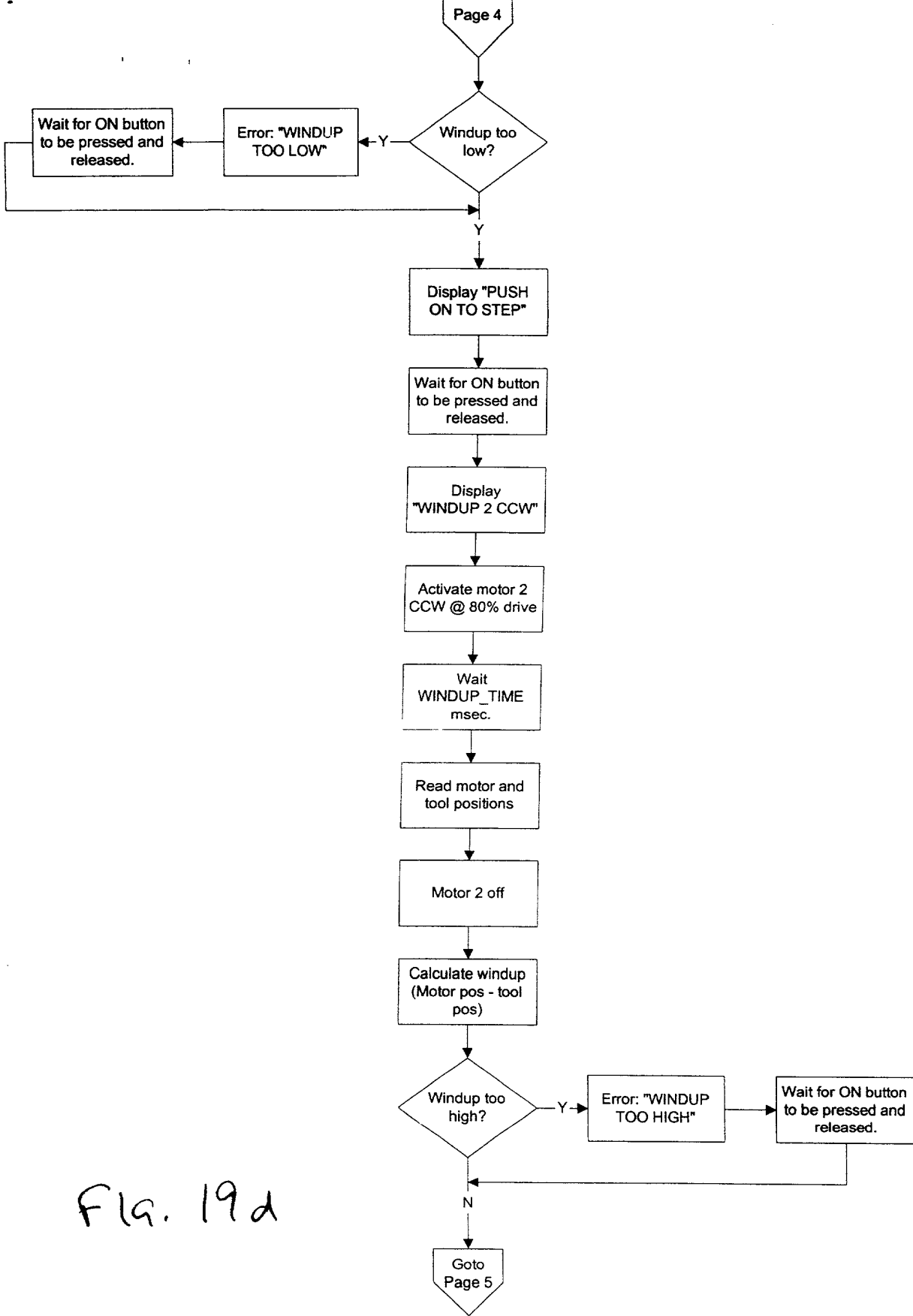


Fig. 19d



0926701 041701

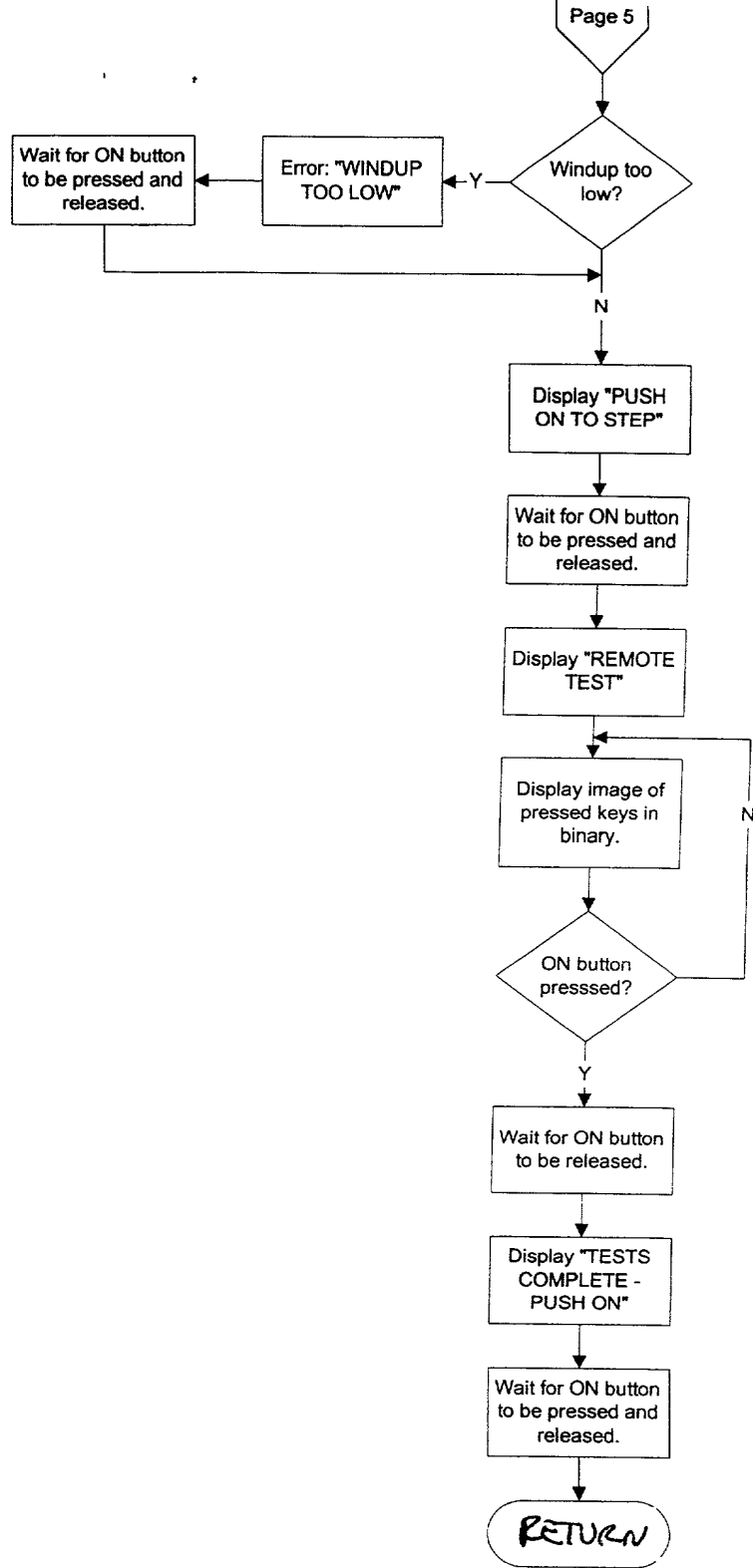


FIG. 19e

START

Initialize motor/tool end positions:  
1mm for clamp,  
0mm for knife.

Clear DLU opened, used, present, old, and ready flags.

\*Kernel tries 3x w/ 100mS between tries to read the DLU EPROM.

Read DLU new flag from EPROM.

Read OK?

Y  
Read and save serial number of DLU.

\*Kernel tries 3x w/ 100mS between tries to read the serial number of the DLU.

N  
Read serial number OK?

N  
Error: "DLU FAULTY-REPLACE"

Issue audible chime and wait 1 second.

Return to kernel.

Y  
Is DLU new?

N  
Set old DLU flag, fast blink rate, issue chime.

Display message "ATTACH NEW DLU"

Set DLU used flag to suppress self test on open.

Y  
Display and speak "READY"

Reset timer, fire button timer, and fire button count.

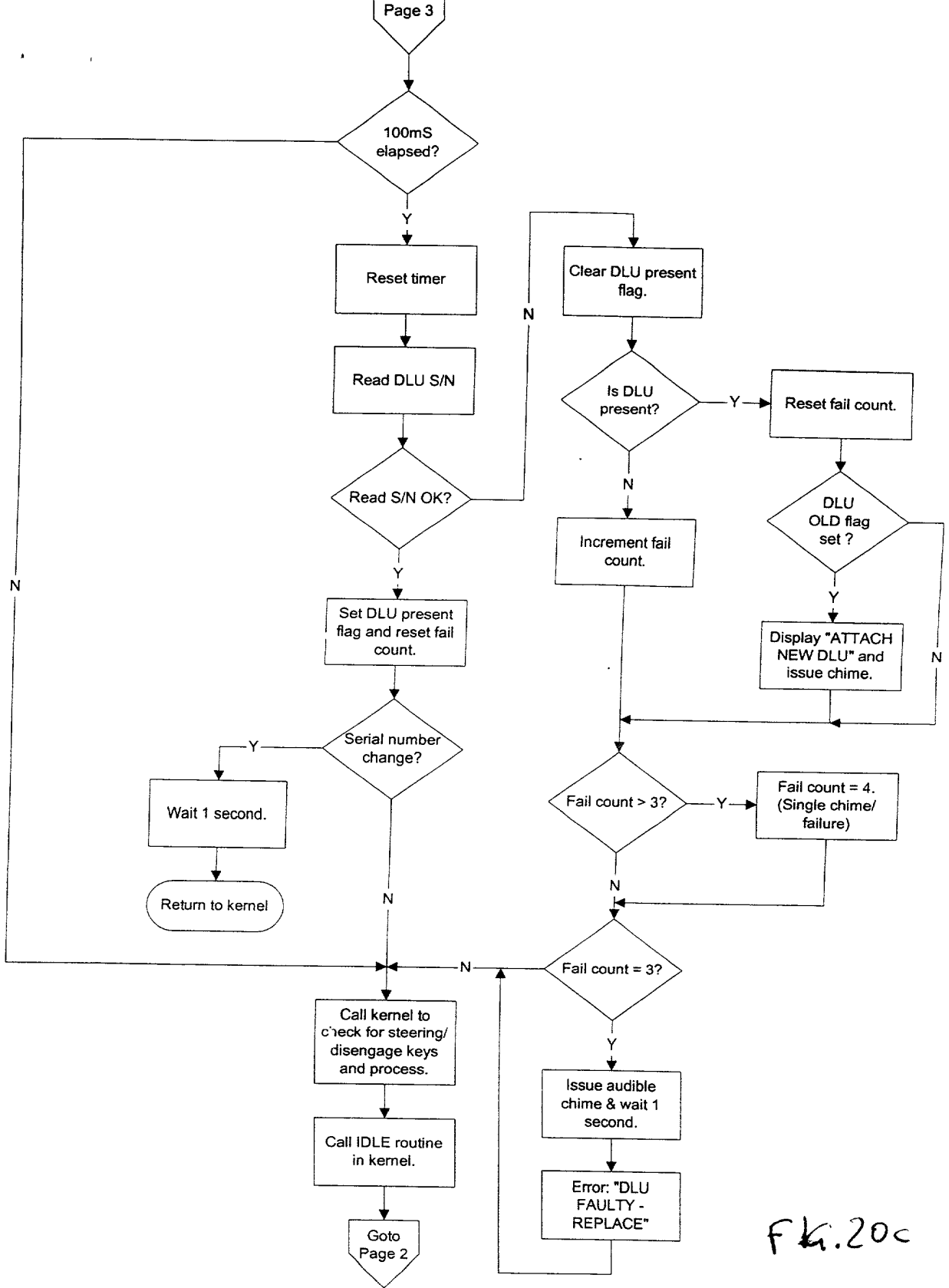
Goto Page 2

FOR THE "REPLACE"

FIG. 20a

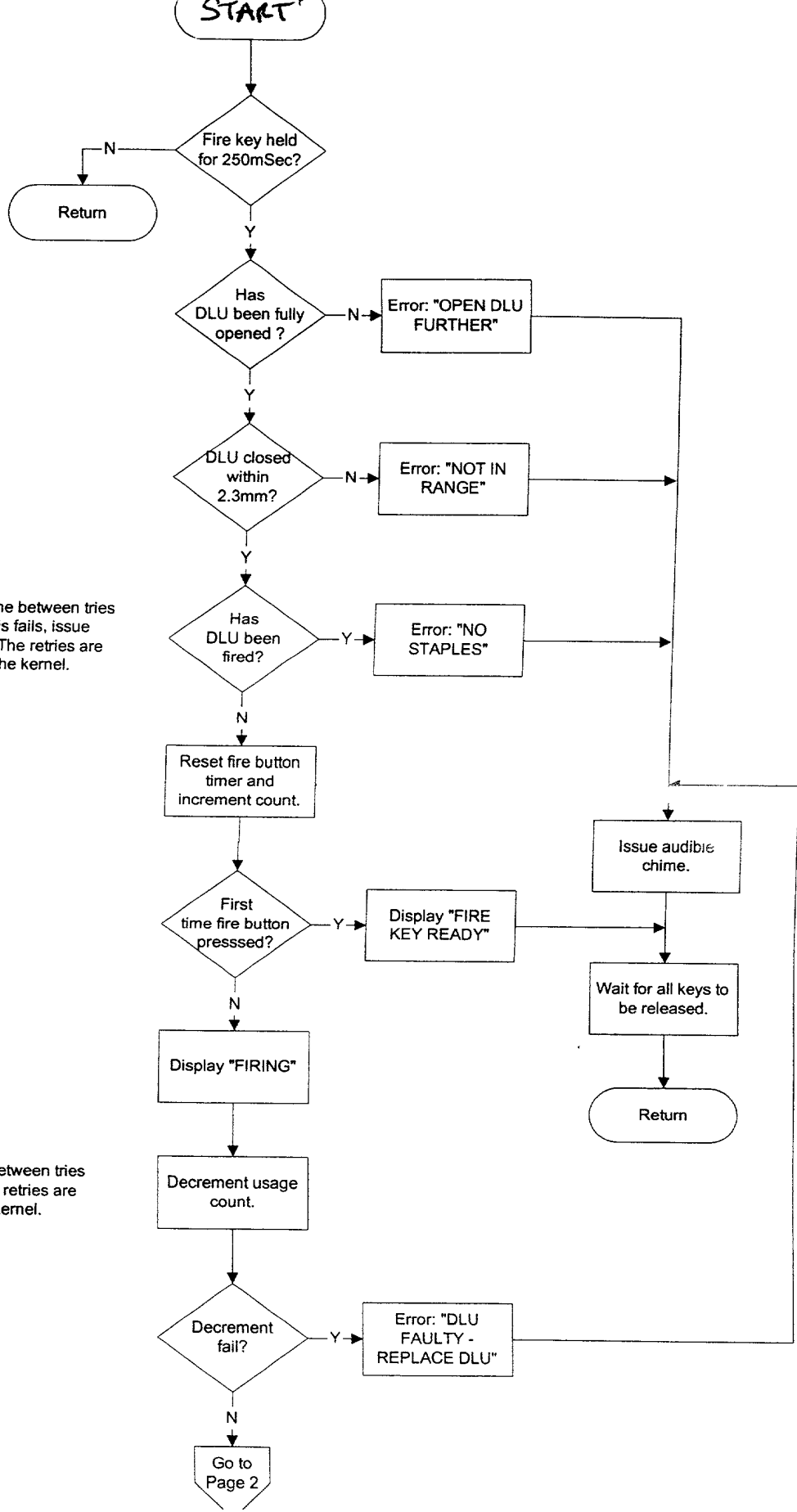


FOI b7D b7C b6D



FK.20c

09032701 044701



\*Try 3x w/ 100mS time between tries to read DLU. If this fails, issue message and exit. The retries are performed by the kernel.

\*Try 3x w/ 100mS time between tries to decrement DLU. The retries are performed by the kernel.

FIG. 21a

09032704701  
443660

Windup threshold is defined as  
SHAFT\_WINDUP\_MAX

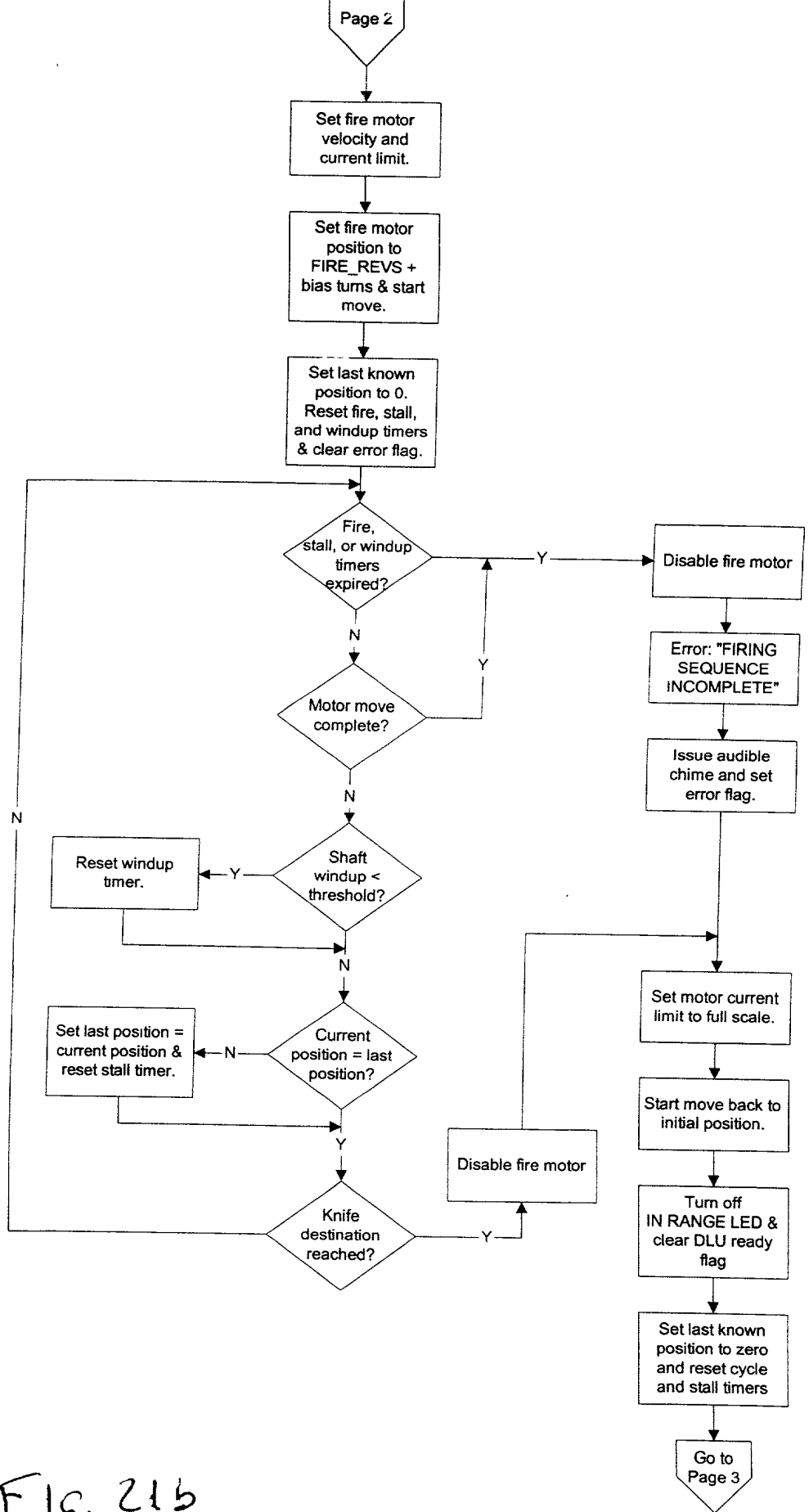
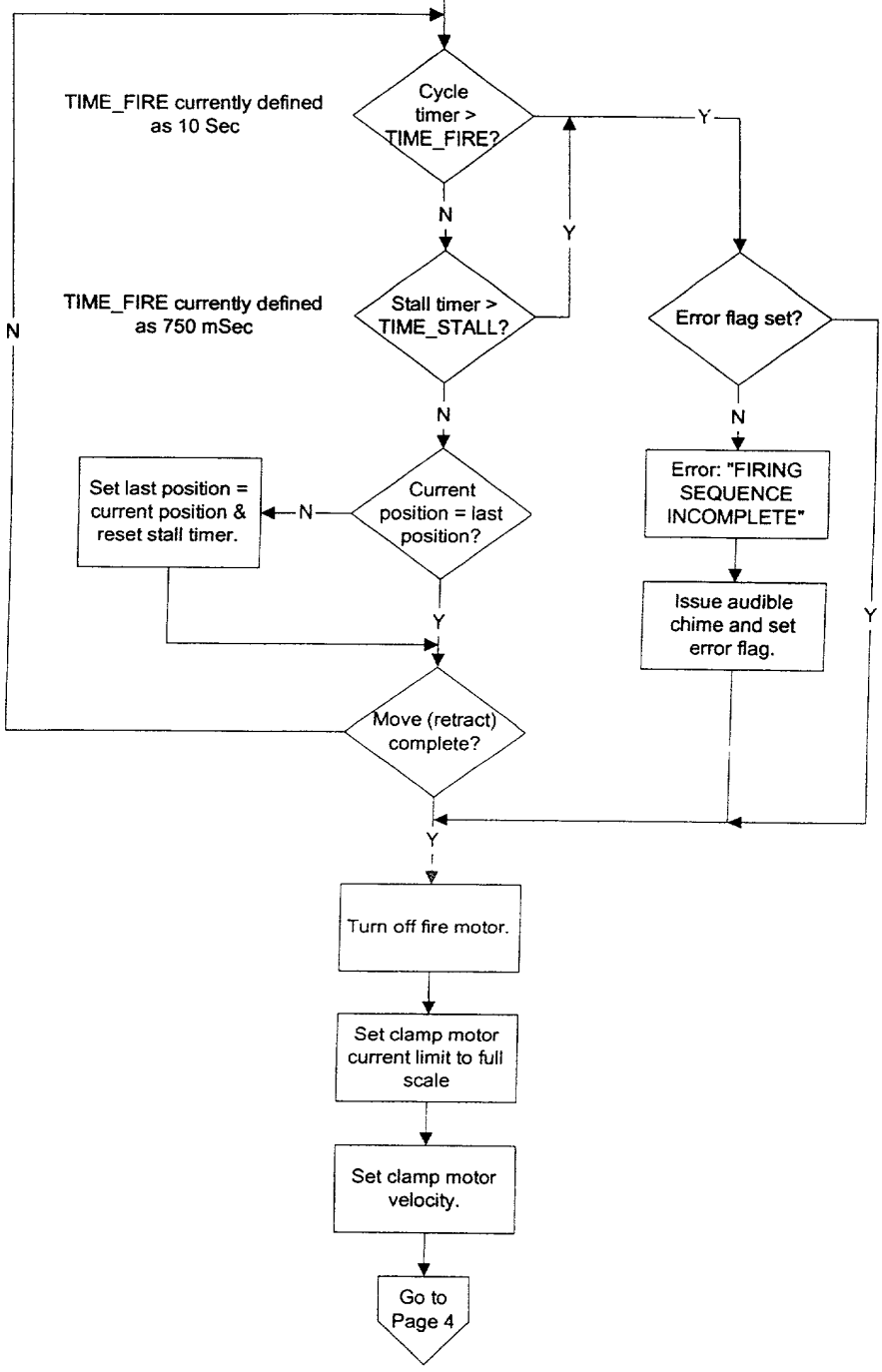


FIG. 21b



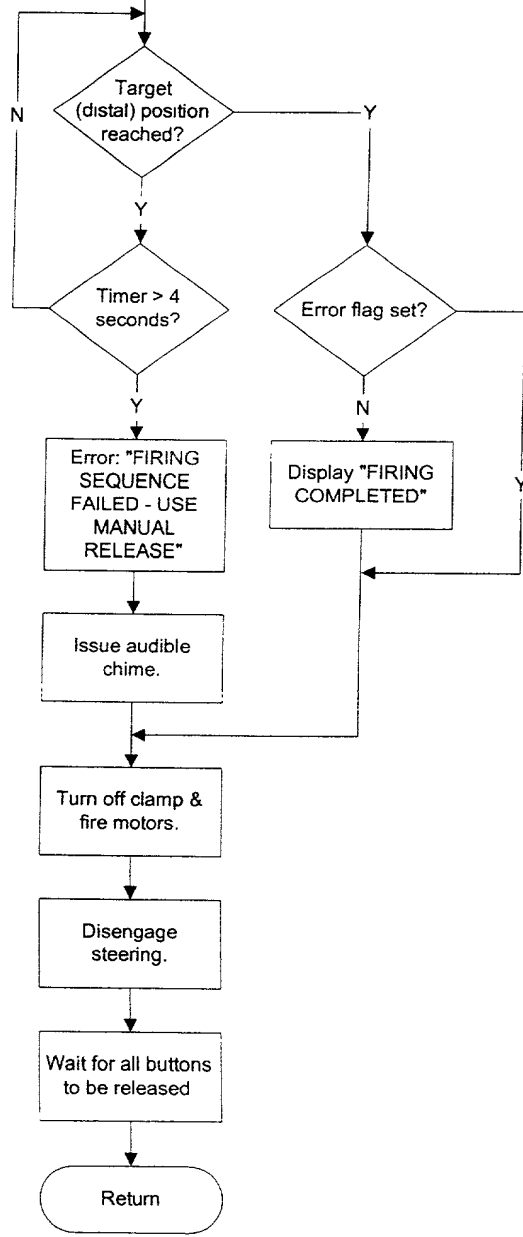
0926791 044701

FIG. 21c

Calc clamp target position = 4 \* present position.

Set clamp motor position to 10mm + bias to ensure full torque.

Reset timer and start move.



09836701 041701

FIG. 21d



09896791.044791  
FDCTHO.TS.9E860

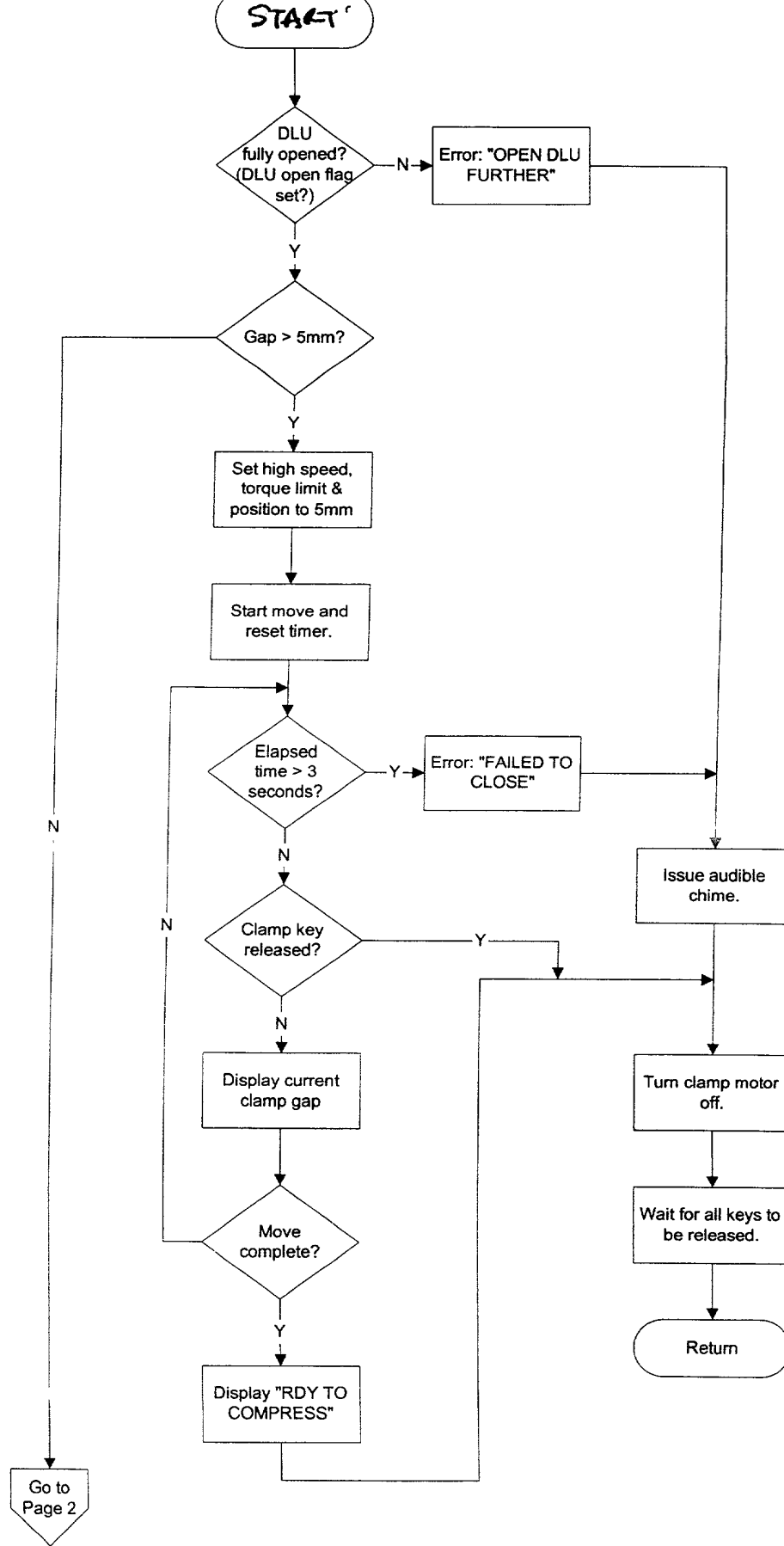


FIG. 22a

Gap <= 1.5mm?

Set high speed & torque limit.

Set position to 1.5mm - bias to ensure full torque near 1.5mm

Reset timer

Display current clamp gap.

Gap <= 2.3mm?

Turn IN RANGE LED on & set DLU ready flag.

Gap <= 1.5mm?

Current limiting for CLAMP\_TIME?

Clamp key released?

Display "STAPLE HEIGHT 1.5 MM"

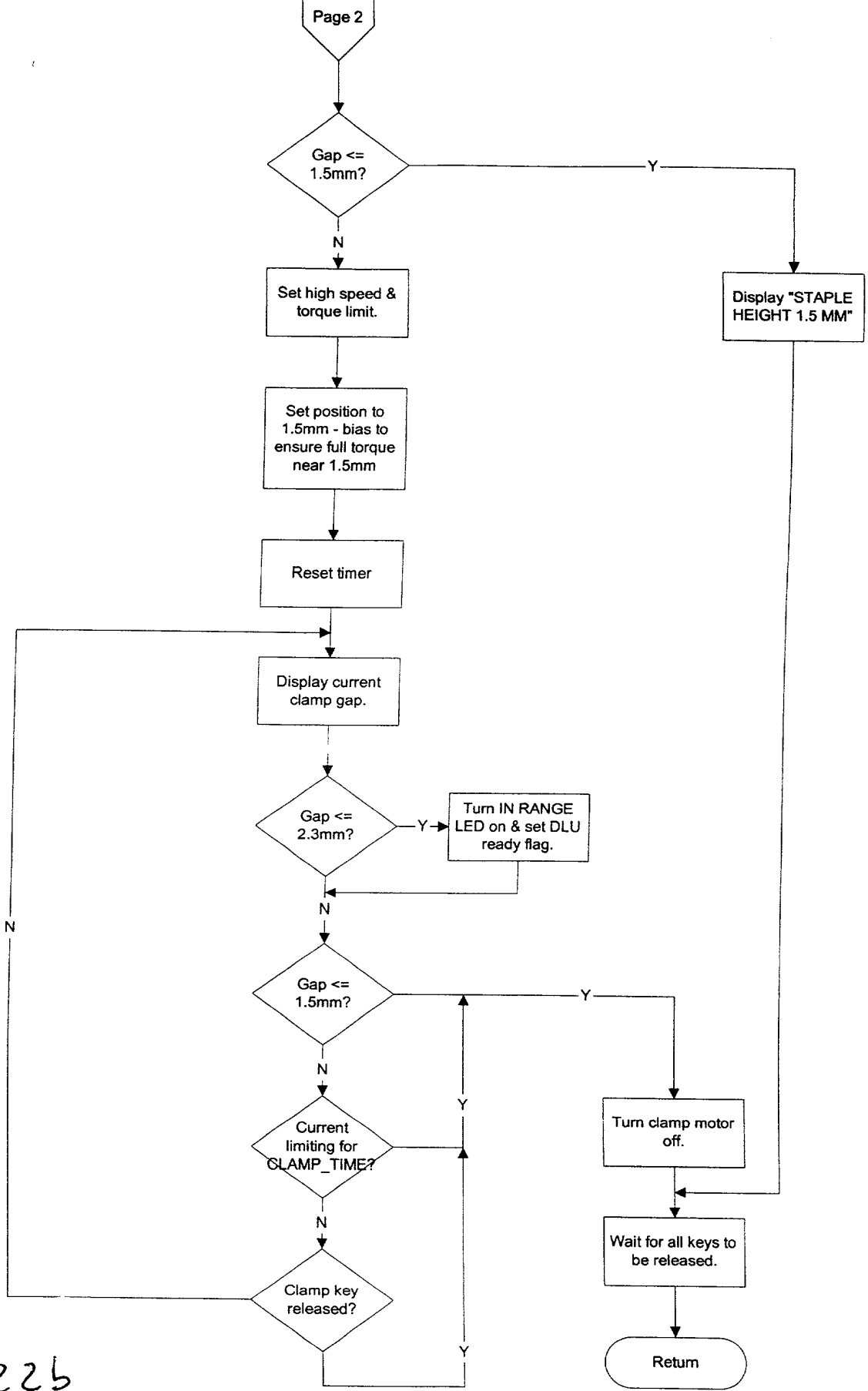
Turn clamp motor off.

Wait for all keys to be released.

Return

09896781.041701

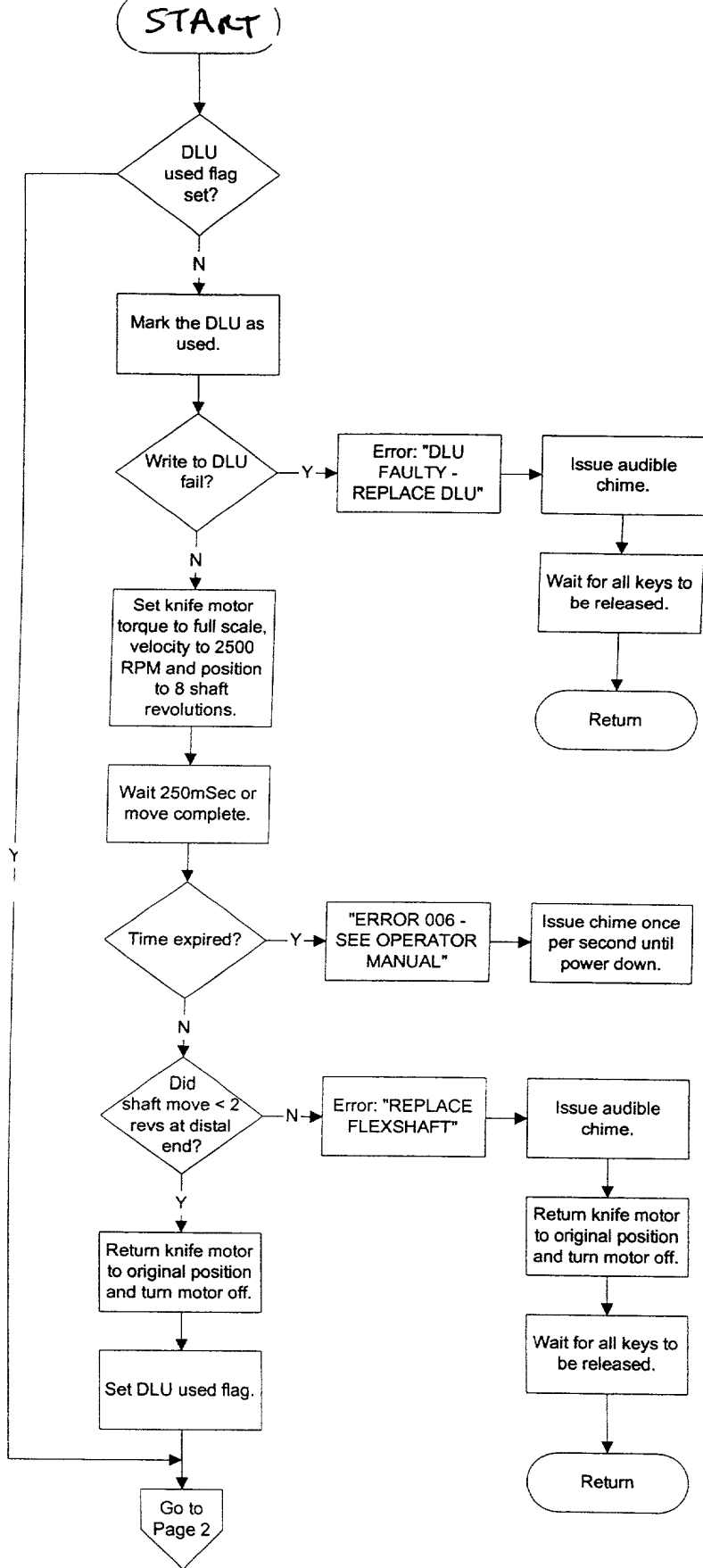
FIG. 22b



START

c

\*The kernel tries 3x w/ 100mS time between tries to write DLU.



09236721 041701

FIG. 23a

09036791.041791  
FD140.F2E860

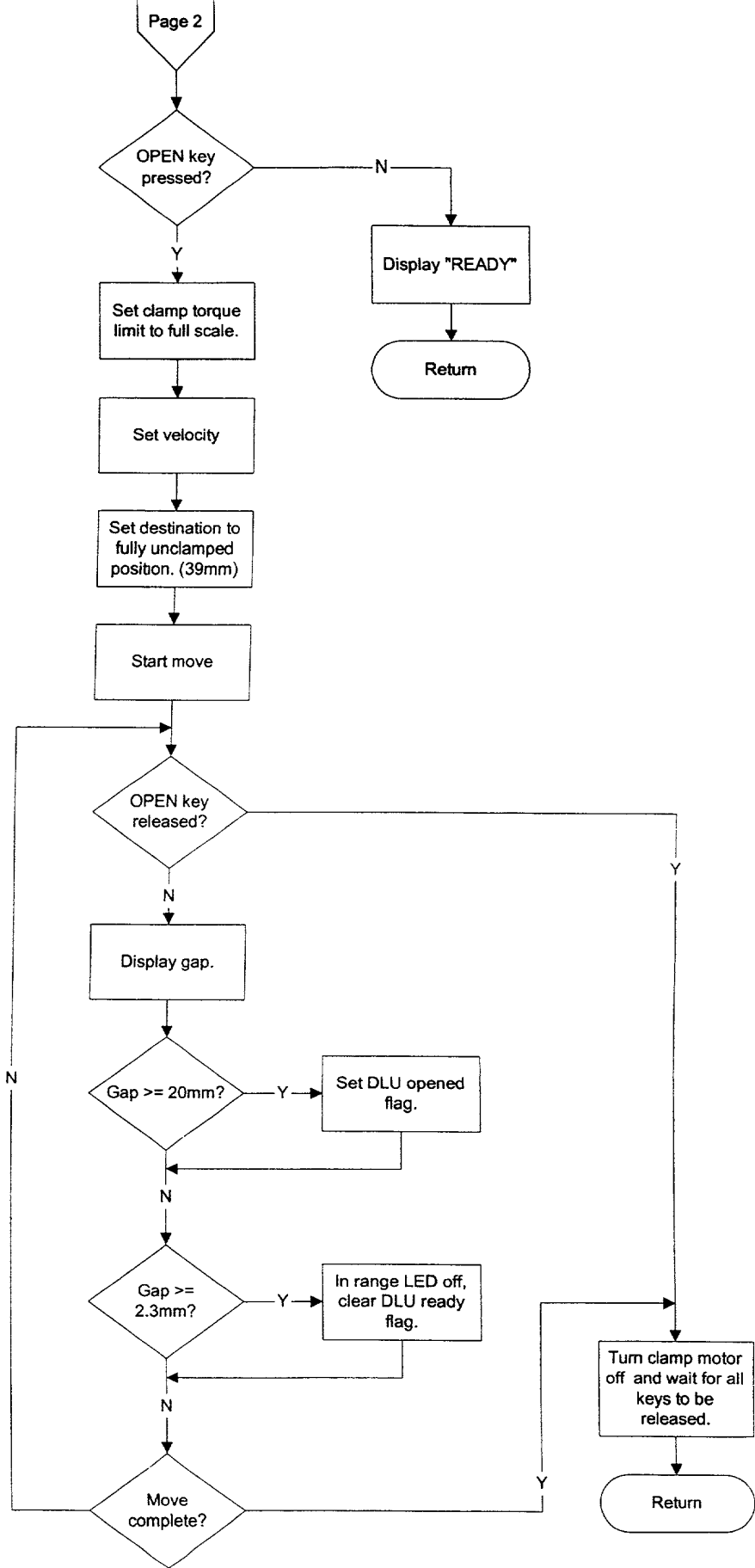


FIG. 23b